

# WebFOCUS

Release 8207.07

About This Release

May 27, 2020

Active Technologies, EDA, EDA/SQL, FIDEL, FOCUS, Information Builders, the Information Builders logo, iWay, iWay Software, Parlay, PC/FOCUS, RStat, Table Talk, Web390, WebFOCUS, WebFOCUS Active Technologies, and WebFOCUS Magnify are registered trademarks, and DataMigrator and Hyperstage are trademarks of Information Builders, Inc.

Adobe, the Adobe logo, Acrobat, Adobe Reader, Flash, Adobe Flash Builder, Flex, and PostScript are either registered trademarks or trademarks of Adobe Systems Incorporated in the United States and/or other countries.

Due to the nature of this material, this document refers to numerous hardware and software products by their trademarks. In most, if not all cases, these designations are claimed as trademarks or registered trademarks by their respective companies. It is not this publisher's intent to use any of these names generically. The reader is therefore cautioned to investigate all claimed trademark rights before using any of these names other than to refer to the product described.

Copyright © 2020, by Information Builders, Inc. and iWay Software. All rights reserved. Patent Pending. This manual, or parts thereof, may not be reproduced in any form without the written permission of Information Builders, Inc.

# Contents

---

- 1. 8207.07 Release Notes ..... 5**
  - Release and Gen Information .....5
  - New Features ..... 5
    - Adapter for Hyperstage (PG): Installation Setting for Heap Size..... 6
    - Supporting Direct Bulk Load for a Flow..... 7
    - Source Control Management..... 10
    - Slowly Changing Dimensions Activation Flag Enhancement.....11
  - Fixes ..... 13
  - Upgrade Notes .....15
  - Known Issues .....16
  - System Requirements .....19



## 8207.07 Release Notes

---

The following topic provides all the information that you need to know about this release of WebFOCUS.

**In this chapter:**

- ☐ [Release and Gen Information](#)
  - ☐ [New Features](#)
  - ☐ [Fixes](#)
  - ☐ [Upgrade Notes](#)
  - ☐ [Known Issues](#)
  - ☐ [System Requirements](#)
- 

### Release and Gen Information

Release Date	Gen Information	Reporting Server
Monday, April 13, 2020	wf040920b Gen 15 wi040920b as040920b	8207.07 Gen 1912

### New Features

## Adapter for Hyperstage (PG): Installation Setting for Heap Size

By default, Hyperstage reserves 75% of memory for use in its functionality. If other processes are running during the Hyperstage installation, Hyperstage may not be able to reserve that much memory, and the installation process may not complete properly.

The amount of memory that Hyperstage reserves can be adjusted during installation using the `ServerMainHeapSize` setting on the *Set Initial Settings* page, as shown in the following image.

The screenshot shows the 'Select Initial Settings' window with the following sections:

- Open Installation Notes** (button)
- Select the Program Folder**
  - Setup will add program icons to the selected Program Folder.
  - Program Folder:
- Select the Installation Root directory**
  - Please select a drive and directory name for a local install or network share and directory name for a network install.
  - Setup will use Installation Root as a parent directory for the `ib\srv82` directory structure.
  - Installation Root:
  - ☐ Customize default directory locations
- ☐ Configure SMTP Mail Server
- ☐ Configure NLS Region Settings based on System Locale
- Hyperstage ServerMainHeapSize Configuration (optional)** (highlighted with a red box)
  - Please enter size in MegaBytes that will be reserved for the Hyperstage engine.
  - The `ServerMainHeapSize` should normally be set to 60-80% of Total Physical Memory. Memory used by other Reporting Server Processes, including the Bulk Data Loader, should be deducted in the calculation of Available Memory.
  - Total Physical Memory: 8078
  - Current Available Memory: 1831
  - Recommended value for `ServerMainHeapSize`: 605 MB
  - The `ServerMainHeapSize` will be stored in the Hyperstage configuration file (`infobright.cnf`).
  - Hyperstage `ServerMainHeapSize`:

At the bottom are buttons for '< Back', 'Next >', and 'Cancel'.

The setting will be added in the `infobright.cnf` file within the `HyperstagePG\ib_data` directory.

## Supporting Direct Bulk Load for a Flow

Direct Bulk Load is a feature of DataMigrator and Data Flow that can significantly shorten load times when a source file is in the expected format of the bulk load program for the database to be loaded. The faster load times result from loading the file directly, without creating an intermediate file.

In prior releases, Direct Bulk Load could only be enabled as an adapter setting, meaning that all flows using that adapter would use it. This could be problematic if some input files met the requirements of a database and some did not.

Now you can enable or disable Direct Bulk Load on each data flow. However, in order for Direct Bulk Load to be enabled for a flow, Extended Bulk Load must be used and Optimize Load must be enabled.

When Extended Bulk Load is used and Optimize Load is enabled, data is loaded directly to the target database without the additional extract and transformation steps provided the following conditions are met:

- ☐ The data source is a delimited flat file.
- ☐ The file attributes including Header, Enclosure, Delimiter and Record Delimiter are supported by the target database.
- ☐ Only insert operations are used (no updates).
- ☐ No filters are used.
- ☐ No aggregation is specified.
- ☐ No transformations are used.

When Direct Bulk Load is used, the following message appears in the DataMigrator log:

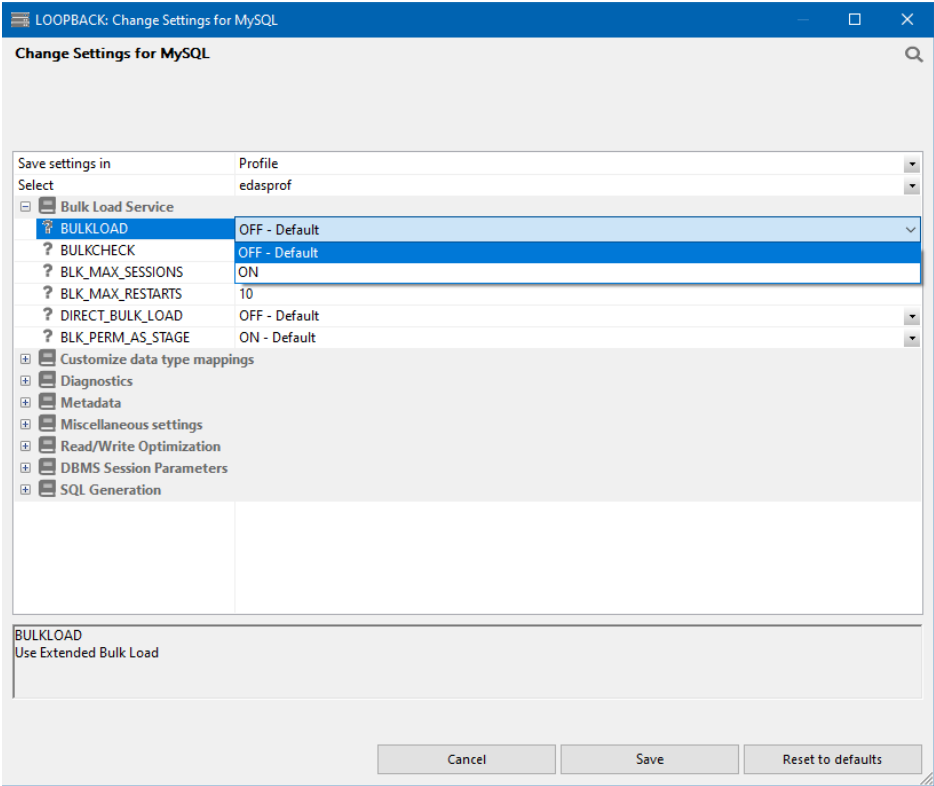
`(ICM18637) Load Operation will use Direct Bulk Load Feature`

The following are the supported databases and data stores:

- ☐ Apache Hive
- ☐ Apache Impala
- ☐ Apache Spark
- ☐ Amazon RedShift
- ☐ ExaSQL

- ☐ Jethro
- ☐ MariaDB
- ☐ MS SQL Server
- ☐ MongoDB
- ☐ MySQL
- ☐ PostgreSQL
- ☐ Snowflake
- ☐ Salesforce.com
- ☐ Sybase ASE
- ☐ Vertica

To enable Extended Bulk Load, right-click an adapter that supports bulk load, and select Change Settings, as shown in the following image.





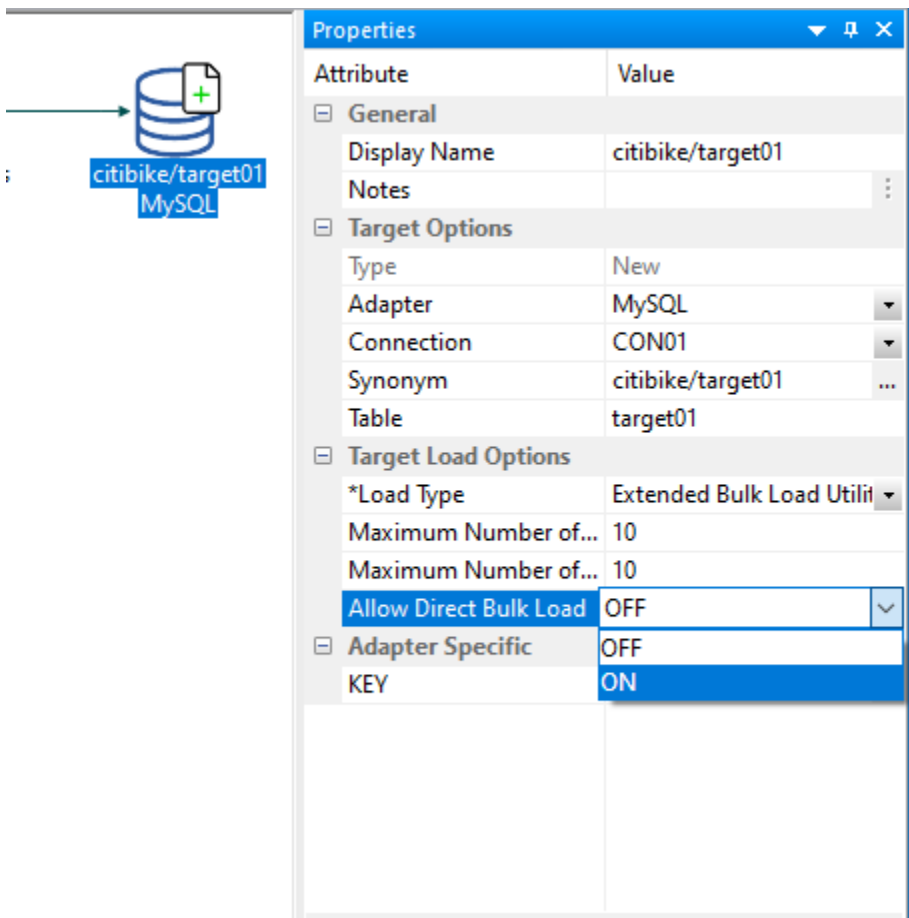
Select ON and click Save.

The following image shows Optimize Load enabled in the Flow Properties (right-click the canvas to the right of the SQL object and select Flow Properties).

The screenshot shows a 'Properties' dialog box with a blue header bar containing a dropdown arrow, a lock icon, and a close button. The dialog is divided into two main sections: 'Attribute' and 'Value'. The 'Attribute' section is expanded to show three sub-sections: 'General', 'Execution', and 'Restart'. The 'Execution' sub-section is selected, and the 'Optimize Load' checkbox is checked. Other checkboxes in the 'Execution' section include 'Continue processing ...' (unchecked) and 'Stop if 0 rows selected' (checked). The 'Restart' sub-section shows 'Number of attempts' set to 0 and 'Restart From' with a dropdown arrow.

Attribute	Value
<b>General</b>	
Flow name	flow03
Created by	SE02703
Last modified date	
Description	
Comment	
<b>Execution</b>	
Optimize Load	<input checked="" type="checkbox"/>
Continue processing ...	<input type="checkbox"/>
Stop if 0 rows selected	<input checked="" type="checkbox"/>
<b>Restart</b>	
Number of attempts	0
Restart From	

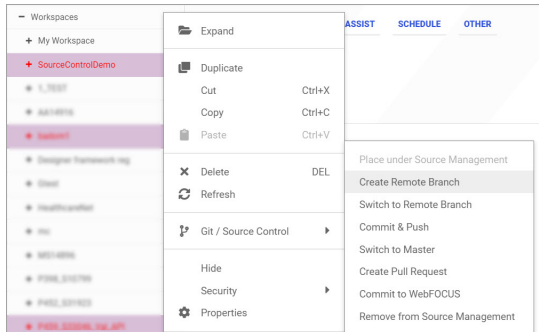
The following image shows the option to enable Direct Bulk Load in the Load Options for a flow.



Source Control Management

Now you can use Source Control management directly from the Home Page. Any workspace can be added to the external GIT Source Control repository, where it can be stored, synced, and safely backed up. This feature allows you to easily reconcile edits made to the same content by different users, store your source code in a centralized location, view historical record of changes overtime, retrieve a specific version of a file, and more. The Source Control feature must be enabled in the Administration Console.

Additional enhancements, such as SCM History and DIFF or Command Line functionality, will be included in a future release.



## Slowly Changing Dimensions Activation Flag Enhancement

Synonyms for data sources that have Type I and Type II Slowly Changing Dimensions (SCD) have an activation flag that identifies whether a record is part of the history or is currently active.

In prior releases, the flag had to be an integer value, where the value 1 identified the active record and the value zero (0) identified inactive (historical) records.

Starting in this release, the activation flag can be a user-defined alphanumeric value up to 20 characters. For example:

`FIELDNAME=ACTIVE, ALIAS=ACTIVE, USAGE=A20V, ACTUAL=A20V, $`

When this field described as a character field, you can still use the values 1 and 0 as in prior releases, or you can assign other values. To assign values, you can use the Set Variables object on a Process Flow tab and set values for the global variables `CM_SCDACT` and `CM_SCDINACT`.

**Example:** Using an Alphanumeric Activation Flag for a Slowly Changing Dimension

The Master File ***dsdimprod\_activealpha.mas*** has a field named PROD\_NAME defined as SCD Type II, as shown in the following image.

Display Name (Title)

— srvidm\_148/dsdimprod\_activalpha

— DSDIMPROD

Internal,Product,Key

I5

Internal Product Key

No

Product,Number

A4

Product Number

No

Product,Name

A30V

Product Name

No

Product,Category

A22V

Product Category

No

Product,Type

A19V

Product Type

No

Active

A20

Active

No

Usage Format

Expression

Description

Nulls

Product Dimension

Properties

Attribute

Value

FIELDNAME

PRODNAME

TITLE

Product,Name

Usage Format

A30V

Type

Character

Length

30

DBMS/Source Data Attributes

Miscellaneous

DESCRIPTION

Product Name

ACCEPT

None

SORT\_BY

PROPERTY

REFERENCE

FIELDTYPE

I - Index

☐

R - Readonly

☐

ACCESS\_PROPERTY

INTERNAL

☐

NEED\_VALUE

☐

Select By

HELPMESSAGE

SCD Type

Type II

GEOGRAPHIC\_ROLE

The field named ACTIVE is the activation flag, as shown in the following image.

Display Name (Title)

— srvidm\_148/dsdimprod\_activalpha

— DSDIMPROD

Internal,Product,Key

I5

Internal Product Key

No

Product,Number

A4

Product Number

No

Product,Name

A30V

Product Name

No

Product,Category

A22V

Product Category

No

Product,Type

A19V

Product Type

No

Active

A20

Active

No

Usage Format

Expression

Description

Nulls

Product Dimension

Properties

Attribute

Value

Length

20

Options

H - right to left

☐

DBMS/Source Data Attributes

Miscellaneous

DESCRIPTION

Active

ACCEPT

None

SORT\_BY

PROPERTY

REFERENCE

FIELDTYPE

I - Index

☐

R - Readonly

☐

ACCESS\_PROPERTY

INTERNAL

☐

NEED\_VALUE

☐

Select By

HELPMESSAGE

SCD Type

Activation Flag

GEOGRAPHIC\_ROLE

The field ACTIVE has format A20.

The following image shows how the records are stored when a new source comes in for product number 1006 with a non-matching product name.

LOOPBACK: Data for star\_schema/dsdimprod\_activalpha. Limit 50 rows. ✖

	Internal Product Key	Product Number	Product Name	Product Category	Product Type	Active
1	1	1004	2 Hd VCR LCD Menu	VCRs	Analog	active
2	2	1006	producta	PDA Devices	Analog	NOT ACTIVE
3	18	1006	productn	PDA Devices	Analog	active
4	3	1008	DVD Upgrade Unit for Cent. VCR	DVD	Digital	active
5	4	1010	750SL Digital Camcorder 300 X	Camcorders	Digital	active
6	5	1012	650DL Digital Camcorder 150 X	Camcorders	Digital	active

The activation flag value for the active record is *active*. The activation flag value for the inactive record is *NOT ACTIVE*.

## Fixes

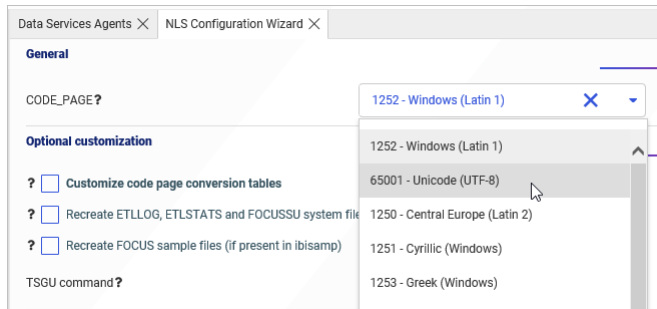
- ❑ Under certain circumstances, the reporting server agent crashes when creating an AHTML chart. (191104054)
- ❑ When selecting a connection and the list of synonym candidates is empty, a message appears without the ability to dismiss it. (191004007)
- ❑ When using the adapter for Salesforce.com®, some server-generated SOQL (Salesforce Object Query Language) queries to retrieve data were not valid or efficient.
- ❑ Using the adapter for Salesforce.com for a request using the NOT-FROM operator is converted to NOT BETWEEN a AND b in a SOQL request.
- ❑ Data is loaded incorrectly when using the adapter for Amazon Athena to load data from a table containing newline or carriage return characters.
- ❑ The displayed output for sorting a field in descending order is not sorted correctly in an aggregated OData request. (200311015)
- ❑ Metadata of a cross-data partitioned table contains extra information that causes the report to fail with errors. (200313007)
- ❑ Only the first value is retrieved from the primary file when joining to a parameterized URL using the REST adapter. (200225058)
- ❑ Cannot edit field characteristics, only titles when uploading an Excel® workbook that contains multiple worksheets and using advanced mode. (191030041)

- ❑ GEO ROLE is still generated when using Get Data after setting Activate GEOGRAPHIC\_ROLE to Off and uploading a file. (190902027)
- ❑ When using the advanced mode to upload an Excel workbook with a name that includes periods and contains multiple worksheets, dragging a worksheet to the Join editor results in an error. (200128075)
- ❑ When opening a synonym and selecting a Frequent Values chart or Pie chart from Data Profiling in App Studio, the chart does not display. (200306003)
- ❑ TABLEF with MISSING and COMPUTE produces different output than when using TABLE. (190201019)
- ❑ From the Data Management Console when selecting an Application Directory and selecting Get Data more than six times, the adapter selection screen does not appear.
- ❑ On windows, the Reporting Server's TCP listener sporadically becomes unresponsive after a large number of connections. (190708017)
- ❑ The sort order of DBCS values in a dynamic drop-down list is set to locale UTF-8 instead of SJIS. (191126009)
- ❑ An EXL07 report that includes a drilldown that passes a parameter value over 2000 bytes in length crashes. (191203132)
- ❑ Selecting SORT ASCENDING, SORT DESCENDING or PAGING for next page or last page on an AHTML report that includes RANKED BY and WEBVIEWER ON returns an error: WebFOCUS Error Executing (11143007, 190806024, 190816066, 200203011, 180928004)
- ❑ When creating a coordinated compound document using a sort field that is defined as A87 or greater on a Unicode (UTF8) server, the agent crashes. (200317134)
- ❑ When parsing an XML file, the parser does not disable the access to external entities, thus, enabling payloads that might cause the server to perform unexpected actions. (200211064)
- ❑ An error occurs when the output viewer in App Studio is set to Microsoft Edge. (200204016)
- ❑ Using a font family that contains a space in the name will not render in a check box or radio button control. (190920097)
- ❑ Refreshing a portal page keeps the last values and does not reset the report parameters. (200203003)

- ❑ The Distribution List displays Name and To values as blanks when editing a schedule. (191023147)
- ❑ When a connection to a remote server is deleted from one user profile, it is deleted from all user profiles. (200117051)

## Upgrade Notes

- ❑ When upgrading from release 8206.xx to 8207.xx, the WebFOCUS Integrated Installation does not automatically assign the Unicode UTF-8 (CP65001) code page to the Reporting Server configuration. In order to configure the Reporting Server to use the UTF-8 code page, you can select the entry directly from the CODE\_PAGE? list, as shown in the following image. In the Web Server console, this list appears in the NLS Configuration tab of the Workspace node.



We recommend that you apply this change because, as of release 8207, WebFOCUS Integrated Installations configure all installed components to use the UTF-8 code page. Changing the Reporting Server code page to UTF-8 will ensure that there is no mismatch of code pages between WebFOCUS, Tomcat, and the Reporting Server, which could result in data retrieval issues.

- ❑ In Release 8207, Magnify functionality is not available. To add Magnify functionality to Release 8207 and higher, see the manual steps outlined in this [topic](#).
- ❑ As of Release 8207, in App Studio, the *Domains* node in the Configured Environments tree has been renamed to the Workspaces node.
- ❑ The WebFOCUS Server on Linux using the Adapter for salesforce.com now requires using OpenSSL version 1.1.1. While current distributions include this release older ones do not.

This software can be downloaded from <https://www.openssl.org/source/> and it must be compiled with the shared option.

Then, specify the location where to find the OpenSSL libraries. For example, if the directory used was /usr/local/ssl, issue one of the following commands and add it to your profile.

```
export IBI_LOAD_SSL_FROM=/usr/local/ssl/lib
```

```
export IBI_LIBPATH=/usr/local/ssl/lib
```

## Known Issues

- ❑ The WebFOCUS help system does not work when the Application Server is configured with Java Version 11. As a workaround, you can configure your WebFOCUS instance to use help hosted by IBI. This provides an additional benefit, as users will have access to the latest content.

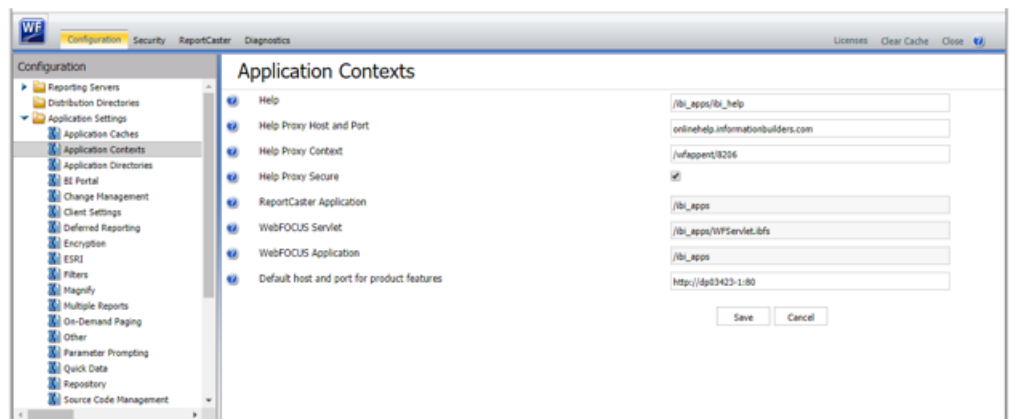
To accomplish this, you need to perform the following configuration using the WebFOCUS Administration Console:

1. Select the *Configuration* tab and navigate to *Application Settings* and then *Application Contexts*.
2. Change the *Help* value to */ibi\_apps/ibi\_help*.

**Note:** The *ibi\_apps* value must be the same as the WebFOCUS web app context created during installation. If you provided an alias, for example, *ibi\_apps8206*, then the value for Help should be entered as */ibi\_apps8206/ibi\_help*.

3. Set the *Help Proxy Host and Port* value to *onlinehelp.informationbuilders.com*.
4. Set the *Help Proxy Context* to */wfappent/8206*. If you are using WebFOCUS Release 8207, set the value to */wfappent/8207*.
5. Select the *Help Proxy Secure* check box.

For example:





6. Click the *Clear Cache* option and continue to sign out and sign in for the settings to take effect.
- ❑ The canvas of WebFOCUS Designer for this release is an interactive canvas based on AHTML. When creating a report, page and row break settings are not supported on this canvas for this release. If you select any other output format, such as HTML, PDF, PPTX, or XLSX, you will see these breaks at runtime. These output format options are available for stand-alone content items only. This will be resolved with the introduction of the non-interactive document canvas in a future release.
  - ❑ When an Insight-enabled chart created in the 8207.00 version of WebFOCUS Designer is added to a visualization as external content, the Insight icon does not appear on the chart when the page is run, so Insight features cannot be accessed. Resave the chart in WebFOCUS Designer 8207.01 or later to make Insight available when the chart is added to a visualization.
  - ❑ When working with the Cell menu in an interactive report, the filtering functionality does not work as expected.
  - ❑ When saving an artifact (from or of and interactive report, chart or dashboard), the output file name is ARsave.html rather than ARhtml.html.
  - ❑ If you create a report or chart in ARVERSION=2 (In-Document Analytics) and you set the output format to PDF Analytic Document, an error occurs when you run it. If you change the option in Procedure Settings to Legacy, the report or chart is produced correctly.
  - ❑ If you are working with an In-Document Analytics chart in landscape mode on an Android mobile device and you switch to portrait mode, your content displays in fullscreen mode. Your chart displays at the bottom. If you run your content in new window mode, your In-Document Analytics chart does not display in fullscreen mode, displaying the chart on the right.
  - ❑ HIDE NULLACRS, which hides across columns that have null or zero values in the entire column, is not supported with interactive content using the new Designer style of In-Document Analytics capabilities.
  - ❑ If you add an existing ARVERSION=1 report to an AHTML document set to ARVERSION=2, it fails at run time, displaying JSON text on the screen instead of the expected report output.
  - ❑ If you are working with a procedure (.fex) and you change the ARVERSION to ARVERSION=2, global filters do not display when you run the procedure.

- ❑ In a scatter plot chart or bubble chart, multiple measure fields on the horizontal and vertical axes generate separate axes, resulting in a grid of scatter plots for each combination of measure fields. In WebFOCUS Designer, if you create a scatter plot chart or bubble chart with multiple measures in the Vertical or Horizontal buckets, only the axis for the first measure in each bucket displays on the canvas. When you run the chart, all measure fields in the Vertical and Horizontal buckets are shown as separate axes, as intended.
- ❑ The Expression Editor has an area that displays objects that you can add to an expression, which are columns, variables or functions. The selection and display of these was controlled by buttons above the area, but when the size of the area was compressed, some of the buttons were hidden. Now there is a single button with a pull-down menu that allows selecting what objects are displayed.
- ❑ Both the db\_collation.sh file and the db\_collation.bat file generate the "Main WARN Error while converting string [ ] to type," error message in the Command Prompt window at the end of their run. This message has no impact on the functionality of this post-installation utility, and it completes the run successfully.
- ❑ The load\_repos.sh file generates the "WARNING: sun.reflect.Reflection.getCaller Class is not supported. This will impact performance," error message in the Command Prompt window at the end of its run. In addition, the db\_inplace\_update.sh, WFRPosUtilCMDLine.sh, and update\_repos.sh files generate the "Main WARN Error while converting string [ ] to type," error message in the Command Prompt window at the end of their run. These messages have no impact on the functionality of these post installation utilities, and each one completes its run successfully.
- ❑ App Studio upgrades are currently not supported. Messages related to failures that occurred while merging changes in the mime.wfs and languages.xml files display during the upgrade installation process.
- ❑ In Release 8207, you cannot install a standalone version of ReportCaster. If you attempt to do so, you receive an error message after you click Next to exit the Advanced Configuration page of the installation wizard. Currently, there is no workaround for this issue. However, you can successfully install ReportCaster by including it in a WebFOCUS installation.
- ❑ When using MS SQL Server as the database platform for the WebFOCUS Repository and upgrading from 8105M to 8207.06, only MS SQL Server 2008 and 2012 are supported. MS SQL Server 2014 and later versions are not supported.

## System Requirements

This release is now certified and has been tested with Google Chrome version 80, Firefox version 74, Microsoft Edge version 80 (WebFOCUS only), Microsoft Edge version 44 (WebFOCUS only), and Internet Explorer version 11. Internet Explorer Compatibility mode is not supported. For additional browser details, see [Browser Information](#).

For more information on supported clients and more, see [Release Information](#).





## Feedback

*Customer success is our top priority. Connect with us today!*

---

Information Builders Technical Content Management team is comprised of many talented individuals who work together to design and deliver quality technical documentation products. Your feedback supports our ongoing efforts!

You can also preview new innovations to get an early look at new content products and services. Your participation helps us create great experiences for every customer.

To send us feedback or make a connection, contact Sarah Buccellato, Technical Editor, Technical Content Management at [Sarah\\_Buccellato@ibi.com](mailto:Sarah_Buccellato@ibi.com).

To request permission to repurpose copyrighted material, please contact Frances Gambino, Vice President, Technical Content Management at [Frances\\_Gambino@ibi.com](mailto:Frances_Gambino@ibi.com).



# WebFOCUS

Release 8207.07  
About This Release



**Information  
Builders**

DN4501645.0420

Information Builders, Inc.  
Two Penn Plaza  
New York, NY 10121-2898