

# WebFOCUS

WebFOCUS Release Notes  
Release 8.2 Version 02M

September 26, 2019

Active Technologies, EDA, EDA/SQL, FIDEL, FOCUS, Information Builders, the Information Builders logo, iWay, iWay Software, Parlay, PC/FOCUS, RStat, Table Talk, Web390, WebFOCUS, WebFOCUS Active Technologies, and WebFOCUS Magnify are registered trademarks, and DataMigrator and Hyperstage are trademarks of Information Builders, Inc.

Adobe, the Adobe logo, Acrobat, Adobe Reader, Flash, Adobe Flash Builder, Flex, and PostScript are either registered trademarks or trademarks of Adobe Systems Incorporated in the United States and/or other countries.

Due to the nature of this material, this document refers to numerous hardware and software products by their trademarks. In most, if not all cases, these designations are claimed as trademarks or registered trademarks by their respective companies. It is not this publisher's intent to use any of these names generically. The reader is therefore cautioned to investigate all claimed trademark rights before using any of these names other than to refer to the product described.

Copyright © 2018, by Information Builders, Inc. and iWay Software. All rights reserved. Patent Pending. This manual, or parts thereof, may not be reproduced in any form without the written permission of Information Builders, Inc.

# Contents

---

- 1. WebFOCUS Release Notes ..... 5**
  - Autoprompt ..... 5
  - Active Technologies ..... 6
  - App Studio ..... 8
  - Business Intelligence Portal ..... 9
  - Deferred Reporting ..... 9
  - InfoAssist+ ..... 9
  - Magnify Search ..... 15
  - Migration ..... 15
  - ReportCaster ..... 15
  - WebFOCUS Designer ..... 16
  - WebFOCUS Home Page ..... 18
  - WebFOCUS Language ..... 19
    - HTML Table of Contents..... 19
    - HTML HFREEZE Reporting Feature..... 19
  - WebFOCUS National Language Support ..... 19
  - WebFOCUS Security ..... 20



## WebFOCUS Release Notes

---

These topics provide current product limitations and known issues for WebFOCUS Release 8.2 Version 02, and maintenance releases.

### In this chapter:

- |   |   |
|---|---|
| <input type="checkbox"/> <a href="#">Autoprompt</a>                   | <input type="checkbox"/> <a href="#">Migration</a>                          |
| <input type="checkbox"/> <a href="#">Active Technologies</a>          | <input type="checkbox"/> <a href="#">ReportCaster</a>                       |
| <input type="checkbox"/> <a href="#">App Studio</a>                   | <input type="checkbox"/> <a href="#">WebFOCUS Designer</a>                  |
| <input type="checkbox"/> <a href="#">Business Intelligence Portal</a> | <input type="checkbox"/> <a href="#">WebFOCUS Home Page</a>                 |
| <input type="checkbox"/> <a href="#">Deferred Reporting</a>           | <input type="checkbox"/> <a href="#">WebFOCUS Language</a>                  |
| <input type="checkbox"/> <a href="#">InfoAssist+</a>                  | <input type="checkbox"/> <a href="#">WebFOCUS National Language Support</a> |
| <input type="checkbox"/> <a href="#">Magnify Search</a>               | <input type="checkbox"/> <a href="#">WebFOCUS Security</a>                  |
- 

### Autoprompt

The following are known issues that apply to WebFOCUS Autoprompt:

- ☐ The dynamic filter type is required for a Responsive Autoprompt chained grouping that is created for fields within the same dimension hierarchy.
- ☐ Save Parameter reports created from the Autoprompt page do not inherit the properties of the report from which they were created. The Only Run as Deferred Report property is the only property that Save Parameter reports inherit from the original.
- ☐ A request issued from the Responsive Autoprompt page generates an unknown fieldname error and fails to run if one of the parameter-based fieldnames in the request includes FOC\_NONE in the list of values assigned to it. This problem does not occur when using the HTML Autoprompt page.
- ☐ A Responsive Autoprompt chained filter does not limit the values available for selection based on the selections for the prior filter when the fields referenced in the chained filter are not listed in the order specified in the data definition .mas file.

- ❑ Responsive Autoprompt chained fields with a descending sort order (SORT=DESCENDING) do not list values in descending sort order when using a Google Chrome™ or Mozilla Firefox® browser. These values are listed correctly when using the Internet Explorer 11® or Microsoft Edge® browser.
- ❑ The second run of a procedure that uses a Master File with DBA Security, and includes a Master File Description (MFD) profile and global variables, generates FOC805 and FOC295 errors when submitted from the Reporting Server node or the Repository folder path in the WebFOCUS Client. These errors do not occur when running the procedure from the Reporting Server Web Console.
- ❑ In the Autoprompt interface, dynamic filter value lists do not display their values when the Master File for the procedure uses the FOCEXEC=ACCEPT option to retrieve values by running a FOCEXEC procedure.
- ❑ Responsive Autoprompt dynamic chained filters that specify a field as a display value do not list field values due to an Autoprompt processing error.

## Active Technologies

The following are known issues in Active Technologies:

- ❑ If you are running an active document with chained (linked) filter prompt controls, you may not see the correct values in the lower level (children) filter prompt controls when selecting a value from the primary (parent) filter prompt control. To remedy this, you can add ARDATA\_FILTERONLY=ON to the children filter components in the COMPOUND LAYOUT syntax.
- ❑ Drill-down functionality and conditional styling are not fully supported in Active Technologies for PDF (APDF output format).

The following are known issues with charts in Active Technologies:

- ❑ When creating a chart in AHTML format, if you include a DEFINE field in the chart heading, at run time, the value of the DEFINE field is not resolved and does not display in the heading. As a workaround, you may also add the DEFINE field as a NOPRINT sort field in the chart.
- ❑ When working with AHTML pie charts, as you lasso over one or more pie slices in certain areas of the chart, extra slices get highlighted, resulting in the wrong number of points being selected when you release the mouse.

- ❑ If you are working in AHTML format and you select the pyramid chart type, at run-time, the chart type is changed to Funnel instead, and exposes incorrect behavior. The chart displays correctly in Live Preview.
- ❑ If you create an AHTML Hexagon Bin scatter chart, which is a publicly available chart extension, filtering options are not available. You can lasso an area of the chart. However, the expected Filter Chart option does not filter the chart. In addition, the Exclude from Chart option does not exclude the designated values.
- ❑ If you convert a report to a scatter chart in AHTML format, the chart is displayed with square markers, as opposed to the expected circles.
- ❑ If you are creating an active chart that does not have the new chart attribute syntax applied, and you add a field to the Legend field container, an ACROSS field is generated. This is not supported in Active. As a result, you may encounter incorrect chart output at run time.
- ❑ When running an AHTML streamgraph chart with a Color BY field, if you hover over a section of the chart, no data value appears to the right of the field name in the tooltip.
- ❑ If you are working in AHTML format and you attempt to run an open-hi-lo-close candle stock chart, a bar chart displays instead of a stock chart. Stock charts are available on the Stock tab in the Other Chart Types dialog box in InfoAssist+.
- ❑ When creating box plot chart types in AHTML format, the chart does not display correctly. The chart is missing some properties that are visible when using JSCHART (HTML5) as the output format.
- ❑ When the chart engine is JSCHART, the values that the mouse points to are incorrect in a scatter chart.

The following are known issues with the Active Technologies tools when the output format of an active report or chart is AHTML:

- ❑ The Chart/Rollup Tool displays incorrect values in an active report or chart when active cache is enabled.
- ❑ The aggregation feature does not work as expected in a procedure that uses aggregation after generating a Pivot table from an active report.

The following support and known issues apply to Active Technologies for mobile web apps:

- ❑ If you are working with an AHTML report on a mobile device and you switch to Original View, the Freeze Column and Unfreeze All options are not available in the column menu. When you switch to Fullscreen View, these options are restored.

- ❑ When running a compound active document with multiple charts on a mobile device, or on a desktop environment where the size of the browser window has been reduced so that the chart tooltip menu is larger than the chart container, the tooltip menu disappears behind an adjoining chart when hovering the mouse over the various charts in the document.
- ❑ If you are working with a report in AHTML format on a mobile device and you select a column and then tap *Freeze Column*, the intended freeze functionality is not applied to the selected column in the original active report view.

## App Studio

The following are known issues in App Studio:

- ❑ When signing in as a Basic user, the Schedule icon displays for HTML files. Basic users are not allowed to create a schedule and the icon should not display.
- ❑ When installing the App Studio Network version, the installation and configuration completes successfully. However, the final panel of the installation program displays a message alerting you that a warning occurred during the installation process. The warning is caused by a failure to create a shortcut for the readme file in the Program group.  
  
This issue will be fixed in a future update of the product.
- ❑ Pages created in WebFOCUS Designer are not supported in App Studio Release 8.2 Version 02.
- ❑ The first time the Help Wizard is opened, the Help text content overlaps the Wizard scroll bars. Click any item on the Table of Contents to refresh the Help.
- ❑ The visibility of a demographic layer for an Esri map cannot be set at design time in the Settings panel.
- ❑ The infowindow for the HTML5 component does not show fully qualified field names.
- ❑ The transparency of a demographic layer for an Esri map cannot be set at design time using the Settings panel.
- ❑ When an HTML page created with App Studio 8.2.02 has a map object using a zip code layer, the zip codes will not display if there are more than 135 records. If this limit is exceeded, the map will not show the zip code layer.



## Business Intelligence Portal

The following are known issues in the Business Intelligence Portal:

- ❑ When designing or running an active report inside a maximized panel in a collaborative portal, the prompt window dislocates from its expected position on top of the report to the position behind the report window. As a workaround, restore the panel, in which the report is displayed.
- ❑ When designing or running collaborative portals in the Microsoft Edge browser version 40, the collapsible banner icon does not appear.
- ❑ When duplicating a procedure in the Resources tree, incremented numbers are added to the title value of the procedure only when the language is set to English. If other languages are set, the title of the original procedure repeats when you create a duplicate. You can manually add incremented numbers by editing the Title value in the properties of the duplicate procedure.
- ❑ Portals created in WebFOCUS Release 8.0.x and 8.1.x that use the Neutral theme may not render correctly when run in WebFOCUS Release 8.2 Version 01. To ensure that portals render correctly, you can remove customizations that modify the theme.
- ❑ Closing the Business Intelligence Portal using a sign out or by closing the window while InfoAssist+ is open also closes InfoAssist+. Changes made in InfoAssist+ are not automatically saved.

## Deferred Reporting

The following is a known issue in Deferred Reporting:

- ❑ The Parameters prompt window displays default parameter values instead of actual parameter values that are submitted for a deferred report, if a procedure assigns default values to those parameters. The Parameter prompt window opens when you click the Parameters option on the Deferred Report Status interface.

## InfoAssist+

- ❑ The following are known issues when working with visualizations in InfoAssist+:
  - ❑ To ensure that Choropleth maps run correctly when working with the sample procedure *Sales by Country and Product*, you must replace the URL on line 155 with: [https://services.arcgis.com/P3ePLMYs2RVChkJx/arcgis/rest/services/World\\_Administrative\\_Divisions/FeatureServer/0](https://services.arcgis.com/P3ePLMYs2RVChkJx/arcgis/rest/services/World_Administrative_Divisions/FeatureServer/0) or open the procedure file in the newer version of the software. The previously provided URL is no longer supported by Esri®.

- ❑ In earlier releases of Internet Explorer 11, if you attempted to save a storyboard in a visualization, an application server error occurred. This issue has been confirmed to occur with IE 11.0.20. This issue does not occur with IE 11.0.49 and supported Chrome, Firefox, and Edge browser versions. See the Release 8.2 Version 01M Release Guide for browser support information.
- ❑ When a data source containing GEO\_POINT data is uploaded into InfoAssist+ with Business View enabled, the insertion of this data to a Proportional Symbol map in a Visualization will return an error.
- ❑ In Visualization mode, the ability to drill down on a map does not work at run time. You can drill down without issue on maps in preview mode. Within a Visualization map, to obtain the drill up value, you can click *Restore Original* and make the desired selection.
- ❑ In Visualization mode, if you create a bin on a field in the Vertical Axis field container and then drag it to the Filter pane, an error occurs when you attempt to rename the originating bin that displays in the Data pane. If you add a measure to the Query pane before changing the name of the bin, the error does not occur.
- ❑ For ESRI maps that are created Visualization mode, editing a filter that was created by hovering or lassoing an area is not supported. In this case, the filter is created as an Advanced Filter, which is not editable. You can apply an updated filter by deleting the existing filter and recreating a new filter condition with your updated values.
- ❑ If you create an Esri map in Visualization mode in InfoAssist+, the map may not display correctly when adding and showing the output using the Storyboard feature. This applies to SSL environments only.

To resolve this, in the <WebFOCUS Reporting Server>/home/catalog/geo\_services.xml file (App Studio) or <WebFOCUS Reporting Server>/home/catalog/geo\_services.xml, respectively, add a URL to <basemap custom="true" default="true" name="streets" title="World Street Map" url="//services.arcgisonline.com/arcgis/rest/services/ESRI\_StreetMap\_World\_2D/MapServer" icon="qb/streets\_map\_108x72.png" />.

In `drive:/ibi/WebFOCUS82/config/esri-argis-rest.xml`, add <ESRI\_URL URL="https://server.arcgisonline.com/ArcGIS/rest/" DESCRIPTION="Public access data" />.

In `drive:/ibi/WebFOCUS82/ibi_html/ibi_themes/Warm.sty`, delete:

```
"extensions":{
  "com.esri.map": {
    "baseLayer": {
      "basemap": "gray"
    }
  }
}
```

Restart WebFOCUS InfoAssist+.

- ☐ When creating an Esri proportional symbol (bubble) map, if you attempt to lasso and exclude too many data points from the map, a server error may occur.
- ☐ In Visualization mode, when using a measure (BY) field on the horizontal axis in a bubble or scatter chart, the Swap function does not behave as expected.
- ☐ The following are known issues when working with charts in InfoAssist+:
  - ☐ When working in InfoAssist+ Chart mode from within App Studio, the default style setting, or StyleSheet, is not applied when selected.
  - ☐ When creating a histogram in HTML format, adding a measure to the x-axis will result in an error. Use the Create Bin option to turn the measure into a categorized dimension that can be displayed on the x-axis.
  - ☐ Setting STATE ISO2 codes in the InfoAssist+ workbench using Map As with user defined values will fail to render a map. In order to avoid this issue, please define all georoles in the metadata of the master file used.
  - ☐ The legend setting in the InfoAssist+ ribbon for a chart containing a single measure may incorrectly reflect the state of the legend. It may indicate Show Legend as On when the actual value is Auto, which will cause the legend to not show.
  - ☐ Conditional drilldowns are supported for simple drilldowns, but not for multi-drill menus.
  - ☐ When filtering on measure (numeric) fields in Insight, the filters are processed as a WHERE and not a WHERE TOTAL.
  - ☐ When converting a HTML5 histogram to HTML format, it is important to note that the underlying syntax is different between the two formats. This results in a difference in how the fields are placed during the conversion.

HTML5 histograms create bins automatically when a measure is added to the chart. When an HTML5 histogram is converted to HTML, the bin field (which is a DEFINE) is dropped. Therefore, it must be added to the HTML chart manually.

Since the conversion of HTML5 histograms to HTML histograms does not support an identical conversion, you can use the following instructions to build an HTML histogram manually, using the existing bin created by the HTML5 histogram.

1. In InfoAssist+, create a histogram in HTML5 format by adding one measure field to the Measure field container.

**Note:** Bins are automatically created and remain stored in the Data pane for access during the conversion from HTML5 to HTML.

2. On the *Home* tab, in the *Format* group, select the HTML output file format.

The Count field of the original measure is placed on the Y-Axis (Measure).

3. Change the chart type to a Vertical Bar chart.
4. In the Data pane, locate the bin created by your HTML5 histogram.
5. Place the bin on the X Axis.

The output of the two histograms is the same. However, due to their underlying syntax, the HTML histogram must be modified when converting from HTML5 to HTML.

- ☐ When you create a bubble chart and attempt to apply a border using the Style options on the Series tab, the border does not display.
- ☐ Restoring a procedure with PDF/GIF format, when PDF/GIF is hidden, produces HTML output.
- ☐ Interpolation of line charts in 2.5D mode is not supported. Interpolation of line charts in 2D mode is supported. Line charts are drawn with dotted lines in 2D mode.
- ☐ When working with charts in AHTML format, there may be display differences between the Live Preview and the output, due to the fact that ACROSS is not supported.
- ☐ The following are known issues when working with reports in InfoAssist+:
  - ☐ Reports created from a HOLD file do not have a Preview option on the shortcut menu.
- ☐ The following are known issues when working with documents in InfoAssist+:
  - ☐ In InfoAssist+ Document mode, images can be placed on the canvas to be positioned on the document page. This feature is not yet supported for XLSX and XLSX FORMULA documents. Therefore, while the images will display in the preview, they will not be included in the generated output.
  - ☐ When working in Document mode in any Excel® format, the Drill Down option, which is available in the Links group on the Field tab, can be selected, but does not work, as it is not supported for this format. The option is also not supported with the PowerPoint® (.ppt) format. If the format is PowerPoint (.pptx), the functionality is available.
  - ☐ When you restore a document with join only, the join is removed and the original file does not appear in Fields list. The Target file used in the join appears in the Query pane instead.

- ☐ In Document mode, when executing a blank report, the following error message appears:

This file cannot be opened because it has no pages. A blank report could be generated in Document mode after creating a HOLD file and not adding any fields.
- ☐ The following are known issues when styling in InfoAssist+:
  - ☐ When formatting multi-line header or footer text using bold, underline, and italic formatting options, the state of the buttons may not reflect the formatting options of the selected text.
  - ☐ If the global preference for the default StyleSheet is pointing to a non-existing .sty file and Allow user override is not checked, InfoAssist+ returns a Null pointer exception, followed by an Unrecoverable error message, when attempting to launch InfoAssist+.
- ☐ The following are known issues when working with data and Master Files in InfoAssist+:
  - ☐ Master File names that contain arithmetic symbols, such as '+' or '-', are not supported and can produce incorrect results. Specifically, grouping and filtering do not function properly.
  - ☐ When creating Define fields, ensure that your new field does not have the same name as an existing Compute field. Similarly, when creating Compute fields, ensure that your new field does not have the same name as an existing Define field. In both cases, you are unable to delete the Define field.
  - ☐ The Master File view does not show all fields in the Join and Fields Mapping dialog boxes.
  - ☐ Creating a Define with an ampersand (&) and a qualified field name in an expression, and removing the space between the ampersand (&) and field name, returns an unrecoverable error when you click OK.
  - ☐ When using the Join dialog box, if you create a join and try to expand the lower table by clicking and dragging the bottom-right corner of the table, the scroll bars disappear and the dragged table is illegible.
- ☐ The following are known issues in InfoAssist+:
  - ☐ If you create a HOLD file and save it in a temporary directory, dynamic filters will not be able to identify available field values.

- ❑ In Release 8.2 Version 02, there is an enhancement to how the drilldown with dynamic parameters works with an InfoMini destination procedure. Prior to Release 8.2 Version 02, when you drilled down to an InfoMini report with dynamic parameters, the AutoPrompt dialog box was presented within the InfoMini interface for user selection of the destination value. This AutoPrompt dialog box allowed you to confirm the selection from the parent report or select a different value.

In Release 8.2 Version 02, the dynamic parameter connection has been completed. The AutoPrompt dialog box is no longer presented in an open state. The final report is generated with the filter condition set by the parent report applied. The AutoPrompt dialog can still be accessed using the Show filter panel button, allowing you to modify the data selection with InfoMini.

- ❑ For the WebFOCUS Basic User and Db2 Web Query run-time user, InfoMini produces an error message, rather than output. This will be resolved for the upcoming GA release.
- ❑ When using Firefox versions 56 or 57, icons in the toolbar of the Create a filtering condition dialog box may not display clearly. Closing the dialog box and reopening it resolves the issue.
- ❑ When using InfoAssist+ in a Microsoft Edge browser, the background color of the following areas of the application displays in green:
  - ❑ Header, Footer, Sub Header, and Sub Footer dialog boxes
  - ❑ Document text component
  - ❑ Visualization text component

This is due to a known issue with the latest versions of Microsoft Edge. Additional information is available from Microsoft at the following link: <https://developer.microsoft.com/en-us/microsoft-edge/platform/issues/12855917/>

- ❑ When converting an InfoMini report to a chart, the InfoMini menu options are not retained or saved after the conversion.
- ❑ If you have an optional parameter set in a report or chart procedure (.fex) and you save it, the properties of the procedure accurately reflect that Prompt for Parameters is not selected. However, if you modify the .fex and remove the filter, the properties of the .fex are not updated to select the Prompt for Parameters property.

## Magnify Search

The following notes are known issues when using Magnify Search:

- ❑ To enhance processing throughput and high availability failover, indexing directly to disk can now be shared across a distributed system managed by multiple application servers, which regulates the delivery of incoming feeds and distributes searching in parallel. This implementation must be used with the ENGINE feedtype set to FULL. This architecture does not support dynamic partitioning. Instead, a new Java Virtual Machine (JVM) instance is recommended. It is also recommended to contact customer support, to ensure a proper search architecture

For more information, see the *Magnify Search Developer's Guide*.

- ❑ The following links are not available in WebFOCUS Magnify Search 8.2 Version 0.2 and will be added in future releases:
  - ❑ Query Scores
  - ❑ Download
  - ❑ More Like This
  - ❑ View Full Document
  - ❑ Sort By Sentiment

## Migration

The following is a known issue when migrating to WebFOCUS Release 8:

- ❑ The ability to migrate Favorites and Mobile Favorites using the Business Intelligence Dashboard (BID) Migration utility is not available in WebFOCUS Release 8.2 Version 02. For support of the migration of Favorites and Mobile favorites to this version, please contact the Customer Support Team.

## ReportCaster

The following are known issues in ReportCaster:

- ❑ A procedure that generates a chart in HTML5 format does not run when scheduled with PNG, SVG, GIF, JPG, or PDF formats.
- ❑ The API functionalities DSTBULK and DST(DL)MEM are not available. These requests will fail and return a servlet execution error (code 11).

- ❑ Compression of files larger than 4G requires zip64 extensions. For more information, contact customer support.

### WebFOCUS Designer

The following are known issues in WebFOCUS Designer:

- ❑ When viewing Designer pages in the Internet Explorer 11 browser, PDF content items may not display correctly and appear overlaying other items on the page.
- ❑ When using the Internet Explorer 11 browser, you may experience issues with viewing grid containers at design time. As a workaround, use the Google Chrome or Microsoft Edge browser for working with grid containers in WebFOCUS Designer. When running Designer pages in the Internet Explorer 11 browser, grid containers display correctly.
- ❑ When using multiple select checkbox and button set controls for the parameters with multiple default values, these default values do not appear pre-selected when you run the page. As a workaround, leave the control type configured as a multiple select drop-down list.
- ❑ When you run a WebFOCUS Designer page with a Global Name property enabled in the Home Page Viewer, the values you select in the control are remembered after the browser session is closed. As a workaround, run this page in the new browser tab or window. Alternatively, press F12 to bring up the Developer Tools User Interface and delete local storage for the website from which the page was run. This issue will be fixed in the next release.
- ❑ When you add several tabs to a small tabbed container, the tabs may wrap over several lines. This behavior will be changed to a scrolling function in a future release of WebFOCUS Designer.



- ❑ The Default value property for filter controls can only be set for a single value. This limitation will be addressed in a future release of WebFOCUS Designer. As a workaround, you can specify multiple default values in the procedure using the following FOCUS syntax:

```
''value 1'' OR ''value 2''
```

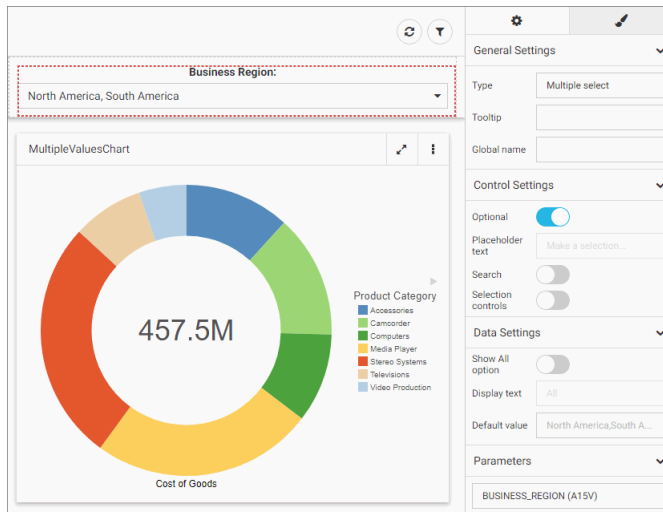
The syntax features alternating sets of three and two single quotation marks ( ' ' ). An example is shown in the following images.

```
ENGINE INT CACHE SET ON
SET PAGE-NUM=NOLEAD
-DEFAULT &WF_HTMLCODE=OFF;
SET HTMLCODE=&WF_HTMLCODE

SET ARGGRAPHENGINE=JSCHART
-DEFAULT &WF_EMPTYREPORT=ON;
SET EMPTYREPORT=&WF_EMPTYREPORT

SET EMBEDDEDHEADING=ON
SET GRAPHDEFAULT=OFF
-DEFAULT &WF_STYLE_UNITS='PIXELS';
-DEFAULT &WF_STYLE_HEIGHT='400.0';
-DEFAULT &WF_STYLE_WIDTH='770.0';

-DEFAULT &WF_TITLE='WebFOCUS Report';
-DEFAULT &BUSINESS_REGION = ''North America'' OR ''South America'';
GRAPH FILE wfretail102/wf_retail_lite
- Created by Info Assist for Graph
SUM WF_RETAIL_LITE.WF_RETAIL_SALES.COGS_US
BY WF_RETAIL_LITE.WF_RETAIL_PRODUCT.PRODUCT_CATEGORY
WHERE WF_RETAIL_LITE.WF_RETAIL_GEOGRAPHY_STORE.BUSINESS_REGION EQ
&BUSINESS_REGION.(OR(FIND
WF_RETAIL_LITE.WF_RETAIL_GEOGRAPHY_STORE.BUSINESS_REGION IN
wfretail102/wf_retail_lite (FORMAT=R15V)).Business Region::)
ON GRAPH PCHOLD FORMAT JSCHART
ON GRAPH SET VIDEO OFF
ON GRAPH SET AUTOFIT ON
ON GRAPH SET UNITS &WF_STYLE_UNITS
```



- ❑ In WebFOCUS Designer, the ability to drag items from one section to another is not yet available. As a workaround, you can delete an item, and then add it to the desired section.

- ❑ When you place an item with missing parameters on the canvas, an error message displays, specifying the first missing parameter. This behavior continues until all missing parameters are resolved.
- ❑ Blog items cannot be added to pages created in WebFOCUS Designer in the current release.

## WebFOCUS Home Page

The following are known issues in the WebFOCUS Home Page:

- ❑ If using Microsoft Windows 7 and the Internet Explorer 11 browser, the thumbnail image may appear cut off in the Properties panel. The image displays correctly in the Grid view of the WebFOCUS Explorer.
- ❑ If using the Internet Explorer 11 browser, when you resize the Properties panel to its widest point on the Home Page, the content area will not be visible.
- ❑ If using the Firefox browser, the Clear Search icon 'x' is missing from the Search field on the Home Page.
- ❑ On the Home Page, in the List View, depending on the size of your browser, some of the columns may not be visible. You can reduce the number of columns by clicking the *Choose columns* button and deselecting the columns.
- ❑ In WebFOCUS Release 8.2 Version 02, the ability to manage aliases for collaborative portals is not yet available.
- ❑ On the Home Page, the Automatically Open property is only in effect for the very first folder on the list.
- ❑ Changing the Sort Order does not affect items in the Portals view. Changing the Sort Order affects items in the Content, Favorite, or Mobile Favorites views.
- ❑ The Edit Metadata option for existing domain and folder templates is not available in the WebFOCUS Home Page shortcut menu. The Edit Metadata option is still available from the Legacy Home Page.
- ❑ When dragging a file into an area of the Home Page where files are not allowed to be dragged and dropped, the icon indicating that this action is not allowed does not display on the file if using an IE 11 browser.

- ❑ Custom domain templates do not appear in the Type list of the New Domain dialog box that opens from the WebFOCUS Home Page. In order to create new domains based on custom domain templates, you must open the Legacy Home Page, right-click the *Domains* node, and click the custom domain template that appears on the shortcut menu.

## WebFOCUS Language

The following is a known issue in the WebFOCUS language:

- ❑ Reports with BY TOTAL and ACROSS, using conditional styling with column notation rather than column name, may apply conditional styling to incorrect columns.
- ❑ When using COLUMN=FIELDNAME (\*) syntax to apply conditional styling to a COMPUTE field in a report, styling is ignored.

## HTML Table of Contents

The following is a known issue with HTML Table of Contents (TOC) reports:

- ❑ When the size of the LEFTMARGIN is customized, only the first table, which is displayed automatically when the request is run, respects this margin. When the second or lower value for the highest-level sort field is selected from the TOC tree, the default size of the left margin is used.

As a result, when View Entire Report (On/Off) is selected in the TOC tree, two left margin sizes are displayed and a separation of the report into two parts occurs. The first table shows the left margin specified, while all other tables adhere to the default left margin size.

## HTML HFREEZE Reporting Feature

The following is a known issue when using the HTML HFREEZE reporting feature:

- ❑ If you create an HFREEZE report with SCROLLHEIGHT=AUTO in an HTML page using HTML Composer, and the width of the report is wider than the width of the frame, two sets of vertical scroll bars display inside the frame. In addition, when using Google Chrome, the vertical scroll bar overlaps the last column of data.

## WebFOCUS National Language Support

The following are known issues for National Language Support:

- ❑ Localized Online Help files for Brazilian Portuguese, French, German, and Spanish will be made available by the end of June 2017 as a download from the [Technical Support Center](#). Sign in to the Technical Support Center to download the installation files. On the navigation bar, point to *Download*, and then click [My Downloads and Shipments](#). Registration is required. Under the Software Downloads/Shipments section, open the *WebFOCUS Client NLS Help* folder.

## WebFOCUS Security

The following are known issues in WebFOCUS security:

- ❑ Unencrypted passwords that contain nothing but hexadecimal characters cause the application server to fail when attempting to connect to the RDBMS Repository. For more information about the EclipseLink bug that causes this failure, see [https://bugs.eclipse.org/bugs/show\\_bug.cgi?id=512344](https://bugs.eclipse.org/bugs/show_bug.cgi?id=512344).
- ❑ The Change Management GUI fails when displayed in Internet Explorer® version 11.0.9600.18537 running on Windows® 7.



# Feedback

*Customer success is our top priority. Connect with us today!*

---

Information Builders Technical Content Management team is comprised of many talented individuals who work together to design and deliver quality technical documentation products. Your feedback supports our ongoing efforts!

You can also preview new innovations to get an early look at new content products and services. Your participation helps us create great experiences for every customer.

To send us feedback or make a connection, contact Sarah Buccellato, Technical Editor, Technical Content Management at [Sarah\\_Buccellato@ibi.com](mailto:Sarah_Buccellato@ibi.com).

To request permission to repurpose copyrighted material, please contact Frances Gambino, Vice President, Technical Content Management at [Frances\\_Gambino@ibi.com](mailto:Frances_Gambino@ibi.com).



# WebFOCUS

WebFOCUS Release Notes  
Release 8.2 Version 02M



**Information  
Builders**

DN4501645.0218

Information Builders, Inc.  
Two Penn Plaza  
New York, NY 10121-2898