

# WebFOCUS

WebFOCUS Release Guide  
Release 8.2 Version 02M

December 17, 2018

Active Technologies, EDA, EDA/SQL, FIDEL, FOCUS, Information Builders, the Information Builders logo, iWay, iWay Software, Parlay, PC/FOCUS, RStat, Table Talk, Web390, WebFOCUS, WebFOCUS Active Technologies, and WebFOCUS Magnify are registered trademarks, and DataMigrator and Hyperstage are trademarks of Information Builders, Inc.

Adobe, the Adobe logo, Acrobat, Adobe Reader, Flash, Adobe Flash Builder, Flex, and PostScript are either registered trademarks or trademarks of Adobe Systems Incorporated in the United States and/or other countries.

Due to the nature of this material, this document refers to numerous hardware and software products by their trademarks. In most, if not all cases, these designations are claimed as trademarks or registered trademarks by their respective companies. It is not this publisher's intent to use any of these names generically. The reader is therefore cautioned to investigate all claimed trademark rights before using any of these names other than to refer to the product described.

Copyright © 2018, by Information Builders, Inc. and iWay Software. All rights reserved. Patent Pending. This manual, or parts thereof, may not be reproduced in any form without the written permission of Information Builders, Inc.

# Contents

---

<b>1. WebFOCUS Release Information .....</b>	<b>5</b>
Functionality .....	5
Browser Information .....	6
Web Browsers.....	6
8.2.x Notes.....	7
Mobile Browser Information.....	8
Accessibility Compliance.....	10
WebFOCUS Client Supported Operating Systems .....	10
WebFOCUS Support Statement for Java 2 Platform, Standard Edition (J2SE) .....	11
WebFOCUS Application Server Minimum JVM Version Requirement.....	12
Supported RDBMS and Drivers .....	12
Supported Web and App Servers .....	14
WebFOCUS SOAP Web Services Minimum Axis Version Requirement .....	14
Localization (NLV) and NLS Support .....	14
National Language Support (NLS) .....	15
Localized Version Support (NLV) .....	15
WebFOCUS and Reporting Server .....	15
Language.....	17
WebFOCUS Client and ReportCaster .....	18
App Studio.....	19
WebFOCUS Open Portal Services - Supported Portals .....	19
Release, Gen Maintenance, HotFix Availability Information WebFOCUS Client and App Studio ..	19
WebFOCUS Reporting and Microsoft Office Support .....	21
WebFOCUS Reporting Formats and Microsoft Product Association.....	21
WebFOCUS EXL2K and PPT Formats and Microsoft Office Suite Support.....	22
Microsoft Office 2003 Support.....	22
WebFOCUS EXL2K and PPT Formats and Microsoft Office Viewer Products Support.....	22
Usage Consideration When Using Hyperlinks to Run WebFOCUS Reports .....	23
WebFOCUS DOC Format.....	23
Recommended Reading.....	23
Additional Resources .....	24
<b>2. WebFOCUS 8.2.02 Release Considerations .....</b>	<b>25</b>

Active Technologies .....	25
App Studio .....	26
Business Intelligence Portal .....	28
Autoprompt .....	29
Charts and Graphs .....	31
HTML5 Upgrade.....	31
InfoAssist+ .....	31
General Enhancements.....	31
National Language Support .....	32
Online Analytical Processing (OLAP) .....	33
ReportCaster .....	33
WebFOCUS Language .....	33
Change to Default Processing of Joins to Flat Files.....	33
Change to Use of Prefix in JOIN AS Commands.....	34
MISSING ON NEEDS SOME Incorrectly Evaluates to MISSING.....	37
Limit on Total Space Allowed for Headings and Footings Removed.....	37
Spacing in EXL2K Formatted Reports With Headings or Footings .....	37
Increased Number of ACROSS Columns.....	38
Change to the HTMLCSS Command (HTML/DHTML).....	38
Magnify Search .....	38
Utilizing the Lucene Facet Count Feature.....	38
Installation .....	39
WebFOCUS Infrastructure and Security .....	40

## WebFOCUS Release Information

---

This topic describes relevant release information for WebFOCUS Release 8.2 Version 02, and maintenance releases.

### In this chapter:

- ☐ [Functionality](#)
  - ☐ [Browser Information](#)
  - ☐ [WebFOCUS Client Supported Operating Systems](#)
  - ☐ [WebFOCUS Support Statement for Java 2 Platform, Standard Edition \(J2SE\)](#)
  - ☐ [Supported RDBMS and Drivers](#)
  - ☐ [Supported Web and App Servers](#)
  - ☐ [WebFOCUS SOAP Web Services Minimum Axis Version Requirement](#)
  - ☐ [Localization \(NLV\) and NLS Support](#)
  - ☐ [WebFOCUS Open Portal Services - Supported Portals](#)
  - ☐ [Release, Gen Maintenance, HotFix Availability Information WebFOCUS Client and App Studio](#)
  - ☐ [WebFOCUS Reporting and Microsoft Office Support](#)
  - ☐ [Additional Resources](#)
- 

### Functionality

The following are functionality support limitations in WebFOCUS Release 8.2 Version 02:

- ☐ Accessibility - support limited to HTML and PDF formats. For additional information, see [Accessibility Compliance](#) on page 10.

Please also review the [WebFOCUS 8.2 WebFOCUS and App Studio Consolidated Features](#) statement that provides information on the WebFOCUS Release 8.2 product components, interfaces, and tools that are discontinued or functionally stabilized due to the availability of new or enhanced product components or confirmed usage decline.

## Browser Information

The following topics describe information for the available web and mobile browsers for WebFOCUS Release 8.2 Version 02.

### Web Browsers

- ❑ Information Builders evaluates the browser vendor support policy and certifies new browser versions. See the Microsoft® website for information on Internet Explorer® (IE), including the [Support for older versions of Internet Explorer ended](#) statement. Information Builders recommends following the usage requirements of the browser vendor to insure your browser is secure and supports the web standards that power today's web-based capabilities.
- ❑ For information on certain conditions that can force Internet Explorer to display pages in a document mode different from the one specified in the webpage, see [Internet Explorer Browser Document Compatibility](#).
- ❑ For information on the expected behavior of Internet Explorer (32-bit) on a Windows x64 machine, see the Microsoft TechNet article [Run IE 32bit on Windows 10 X64](#).
- ❑ See the following information published by Mozilla® for information on Firefox® browser release management:  
[https://wiki.mozilla.org/Release\\_Management/ESR\\_Landing\\_Process](https://wiki.mozilla.org/Release_Management/ESR_Landing_Process)
- ❑ For additional browser, Java Virtual Machine (JVM) and Adobe Reader support information, see [8.2.x Notes](#) on page 7.

Release	Google Chrome™	Mozilla Firefox®	Microsoft Edge™	Internet Explorer®
Release 8.2.02M (December 2018)	Version 70	Version 62	Version 41	Version 11
Release 8.2.02M (June 2018)	Version 66	Quantum 60		
Release 8.2.02M (February 27, 2018)	Version 64	Quantum 58		
Release 8.2.02M (February 1, 2018)	Version 63	Quantum 57 (Supported for Release 8.2.02)		
Release 8.2.02		Version 56	Version 40	

## 8.2.x Notes

- ❑ Simple HTML WebFOCUS reports can be viewed on any browser.
- ❑ Chart/Graph request notes:
  - ❑ *Browser-generated graphs* refer to graphs that are rendered inside the browser using HTML5 (and JavaScript). Browser-generated graphs are utilized in both standard HTML5 output ("FORMAT JSCHART"), and in Information Builders Active Technologies ("FORMAT AHTML").
  - ❑ *Server-generated graphs* refer to traditional Information Builders graph requests that are generated on the Reporting Server and then embedded as a bitmap or vector image in a document or webpage. This includes the following output formats:
    - ❑ Bitmap: PNG, GIF, JPG
    - ❑ Vector: PDF (but not active PDF), SVG
  - ❑ Support for presenting images and graphs in HTML, DHTML, and DHTML compound reports is provided using an image embedding facility based on the client browser. Output generated by Internet Explorer browsers or in scenarios where the browser is unknown (such as when distributed by ReportCaster) supports image inclusion through the creation of a web archive file (.mht). For all other browsers, images are base64 encoded within the generated .htm file.

- ❑ Drill-down links do not work when using an embedded PDF viewer available in some browser versions. Refer to the browser configuration information on how to change the Application Options settings for the relevant content types so that the browser will automatically use Adobe Reader.
- ❑ Adobe Reader support:
  - ❑ Acrobat Reader DC is certified
  - ❑ Adobe XI is supported
  - ❑ Adobe X is supported
- ❑ If you are using Internet Explorer® 11 on a Windows® 2012 R2 OS and you attempt to run an object (such as a report or chart in InfoAssist+), Internet Explorer 11 opens it in a new window instead of targeting the object to a specific frame. For example, in InfoAssist+, the New Window Runtime opens a new browser window that shows the running image, which then replaces that page with the output. Since Internet Explorer 11 does not allow the replacement of that window, it opens a new window instead.

This browser limitation can be remedied by an administrator. For more information, see <https://social.msdn.microsoft.com/Forums/ie/en-US/a5c294e2-e407-491d-ba6a-b7f7edbcabaf/ie11-cant-post-form-data-to-specific-frame-or-window-dialog-opened-via-windowopen?forum=iewebdevelopment>

For information regarding earlier releases, see the [Technical Support](#) page.

## Mobile Browser Information

If you are planning to use WebFOCUS products on mobile devices, please note the following regarding mobile browser support. If you will be using WebFOCUS products on the Windows operating system, see [Web Browsers](#) on page 6.

**Note:** Browsers released after the production date of a WebFOCUS version are subject to certification.

WebFOCUS Developer Tools (for example, WebFOCUS Designer, InfoAssist+, Portal Designer, and so on) are not supported on mobile devices.

The following devices were used in testing WebFOCUS 8.2.02M (December 2018):

- ❑ iOS 12.0
- ❑ Android 8.0, 7.0, 6.0
- ❑ Mobile Faves 3.2.2



The following devices were used in testing WebFOCUS 8.2.02M (June 2018):

- ❑ iOS 11.3, 11.2.6
- ❑ Android 8.0, 7.0, 6.0
- ❑ Mobile Faves 3.2.2

The following devices were used in testing WebFOCUS 8.2.02M (February 2018) and 8.2.02:

- ❑ iOS 11.0 iPad and iPhone (Latest iOS 11 iPad and iPhone is supported)
- ❑ iOS 10.2.1 iPad and iPhone (Latest iOS 10 iPad and iPhone is supported)
- ❑ iOS 9.3 iPad and iPhone
- ❑ AirWatch 5.9 with iOS 10
- ❑ Android 7.0 tablet
- ❑ Android 6.0 tablet and phone
- ❑ Mobile Faves version 3.2.1.5

Usage Considerations:

- ❑ ReportCaster interfaces are supported on tablets.
- ❑ HTML reporting Table of Contents (BYTOC) feature is not supported.
- ❑ Viewing PDF, Excel, and PowerPoint documents may require a 3rd party helper app.
- ❑ To open In-Document Analytics content, JavaScript needs to be enabled in your web browser. On mobile devices, please use the Mobile Faves app. If not installed, download it from the App Store for iOS devices or from the Google Play Store for Android devices.

For detailed information on known issues and documentation updates, see the *WebFOCUS Release Notes*.

For detailed information on expected functionality changes and configurations required for some product features, see [WebFOCUS 8.2.02 Release Considerations](#) on page 25.

For information regarding earlier releases, see the [Technical Support](#) page.

## Accessibility Compliance

For information on the Information Builders software products to which Section 508 accessibility standards are applicable, see the following:

❑ [Technical Memo 4505](#): WebFOCUS HTML Report Accessibility Support

❑ [Technical Memo 4704](#): WebFOCUS PDF Report Accessibility Support

Keyboard navigation is supported with Jaws on a Windows® operating system. For Jaws browser requirement information, see the [Freedom Scientific](#) website.

❑ Release 8.2.02 and 8.2.02M support Jaws Version 18 and 17.

❑ Internet Explorer browser Version IE 11.

❑ Chrome and Firefox browsers are supported with HTML and PDF accessible reports. For release information for the versions certified, see [Web Browsers](#) on page 6.

## WebFOCUS Client Supported Operating Systems

The following table describes the WebFOCUS client supported operating systems.

Vendor (Processor /Architecture)	Operating System Version
Microsoft Windows 64-bit	Windows Server 2016, 2012 R2, 2012
	Windows Server 2008 R2 Service Pack 1
	Windows 10, 8.1, and 7 <i>(limited to development environments only)</i>
IBM i	V7R1
IBM (pSeries 64)	AIX 7.1
IBM (zSeries)	Enterprise Linux Kernel-3.0.101-glibc-2.11 and up
Oracle (Sparc 64-bit)	Oracle Solaris 11
	Oracle Solaris 10

<b>Vendor (Processor /Architecture)</b>	<b>Operating System Version</b>
Oracle (x86)	Oracle Solaris 11
	Oracle Solaris 10
Red Hat (x86_64)	Enterprise Linux 6.1 / Kernel 2.6.32 -glibc-2.6 and up
	Enterprise Linux Kernel-3.10.0-glibc-2.17 and up
Red Hat (IBM Power Systems)	Enterprise Linux 6.1 / Kernel 2.6.32 -glibc-2.6 and up
Hewlett Packard (Itanium IA64)	HP-UX 11i (11.31)

For information regarding earlier releases, see the [Technical Support](#) page.

## WebFOCUS Support Statement for Java 2 Platform, Standard Edition (J2SE)

This topic contains information regarding WebFOCUS release support for the different Oracle JDK versions that WebFOCUS and ReportCaster web applications are deployed on. It is also important to verify the Java version requirements of the web application server version before installing or upgrading Java software.

The following chart notes the status of WebFOCUS certification of Oracle J2SE releases. However, please note:

- ☐ Maintenance updates of Oracle J2SE within the same version level are supported.
- ☐ Using earlier versions of WebFOCUS with later JDK versions is supported. However, the solution to some problems might require an upgrade to a later WebFOCUS or JDK service pack.
- ☐ Support for later J2SE major releases requires certification and is not supported unless specified in the following chart.
- ☐ In the chart below, when reference is made to the following terms:
  - ☐ *Certified* - means the specified release(s) of Java have been tested within the specified WebFOCUS Release QA (Quality Assurance) certification process.

- ❑ *Supported* - means the specified release(s) of Java have not been tested within the WebFOCUS Release QA (Quality Assurance) certification process but is expected to work based on the reliability of earlier minor release updates. Limited testing in specific WebFOCUS Product areas may have been performed.

Please report any problems you experience with a certified or supported version of Java to Customer Support Services for evaluation.

For information regarding earlier releases, see the [Technical Support](#) page.

### WebFOCUS Application Server Minimum JVM Version Requirement

As of WebFOCUS Release 8.2, the minimum JVM version requirement for the application server that WebFOCUS and ReportCaster web applications are deployed on is JVM Version 7. For additional information, see [WebFOCUS 8.2 Java, Servlet, and Install Requirements](#).

J2SE Release	Certification Status
8u192	<a href="#">Certified</a> with WebFOCUS Release 8.2.02M (December 2018)
8u161	<a href="#">Certified</a> with WebFOCUS Release 8.2.02M (February and June 2018)
8u152	<a href="#">Certified</a> with WebFOCUS Release 8.2.02
8u144	<a href="#">Certified</a> with WebFOCUS Release 8.2.02
7u80	<a href="#">Supported</a> with WebFOCUS Release 8.2.02M and 8.2.02

For information regarding earlier releases, see the [Technical Support](#) page.

### Supported RDBMS and Drivers

Supported relational databases for the WebFOCUS repository:

Vendor (RDBMS)	Version	JDBC Driver
Apache Software Foundation (Derby)	10.9.1.0	derbyclient.jar

<b>Vendor (RDBMS)</b>	<b>Version</b>	<b>JDBC Driver</b>
Microsoft® (MS SQL Server®)	2016	sqljdbc42.jar
		sqljdbc41.jar
		sqljdbc4.jar
	2014	sqljdbc4.jar
	2012	sqljdbc4.jar
	2008	sqljdbc4.jar
IBM® (Db2)	10.5	db2jcc4.jar
	9.7 FP4	db2jcc4.jar
	9.5 FP9	db2jcc4.jar
Oracle® (Database)	12c	ojdbc7.jar
		ojdbc6.jar
	11gR2	ojdbc6.jar
	11g	ojdbc6.jar
	10.2	ojdbc6.jar
Oracle® (MySql)	5.7.9	mysql-connector-java-5.1.18-bin.jar
	5.5.x	mysql-connector-java-5.1.18-bin.jar
	5.1.x	mysql-connector-java-5.1.18-bin.jar
Postgresql	9.3.4	postgresql-9.2-1002.jdbc4.jar

For information regarding earlier releases, see the [Technical Support](#) page.

## Supported Web and App Servers

Supported Web and Applications Servers:

<b>Vendor</b>	<b>Version</b>
<b>Web Server &amp; Application Server</b>	
Apache Software Foundation (Apache Tomcat®)	8.5.x (latest version)
Apache Software Foundation (Apache HTTP)	2.4
	2.2
IBM® HTTP Server	8.5.5
IBM® WebSphere®	8.5.5.x
Microsoft® (IIS)	8.5
	8.0
	7.5
	7.0
Oracle® WebLogic	12c (12.2.2.1, 12.1.3.0.0, 12.1.1.0.6)
Red Hat® (JBoss)	Enterprise Application Platform 6.2.4

For information regarding earlier releases, see the [Technical Support](#) page.

## WebFOCUS SOAP Web Services Minimum Axis Version Requirement

As of WebFOCUS Release 8.2, the minimum Axis version requirement for WebFOCUS SOAP Web Services is Axis 2.

## Localization (NLV) and NLS Support

Information Builders provides National Language Support and Localized Version support for WebFOCUS and App Studio in select languages. Requests for additional languages may be submitted by contacting Customer Support Services and opening a New Feature Request.

For information regarding earlier releases, see the [Technical Support](#) page.

## National Language Support (NLS)

National Language Support (NLS) involves reading and interpreting data stored in code pages that represent the character sets of various international languages. Information Builders' proprietary NLS application programming interface (API) code-page architecture transcodes data between application client and server components and manages all sorting, case conversion, and formatting for dates, currency, and numbers.

## Localized Version Support (NLV)

A localized version is a software product in which the user interface (for example, menus and utilities) appears in a particular language. Information Builders localized versions are positional. Each button or menu choice is always in the same relative position in the product, and only the text of the labels changes. Therefore, it is easy for anyone who is familiar with an Information Builders' product in one language to support that product in another language.

Localized versions have complete National Language Support (NLS) capability. You can access data for any supported language, with all national characters processed, displayed, and printed correctly.

## WebFOCUS and Reporting Server

WebFOCUS Release 8.2 Version 02 and of the Reporting Server Release 82M support the following code pages for data processing:

### ASCII Platforms

137 - U.S. English/Western Europe (Latin 1)	923 - Latin 9 (ISO 8859-15)
437 - U.S. English	942 - Japanese (shift-JIS)
813 - Greek (ISO 8859-7)	946 - Simplified Chinese
850 - Western Europe	949 - Korean
852 - Central Europe	1089 - Arabic (ISO 8859-6)
857 - Turkish	1250 - Central Europe (Latin 2)
860 - Portuguese	1251 - Cyrillic (Windows)
862 - Hebrew	1252 - Windows (Latin 1)

863 - French Canadian	1253 - Greek (Windows)
865 - Nordic	1254 - Turkish (Windows)
866 - Cyrillic II	1255 - Hebrew (Windows)
869 - Greek	1256 - Arabic (windows)
912 - Central Europe (ISO 8859-2)	1257 - Baltic (Windows)
915 - Cyrillic (ISO 8859-5)	10942 - Japanese (EUC)
916 - Hebrew (ISO 8859-8)	10948 - Traditional Chinese
920 - Turkish (ISO 8859-9)	65001 - Unicode (UTF-8)
921 - Baltic (ISO 8859-13)	

#### **EBCDIC Platforms (IBM z/OS and IBM i)**

37 - IBM EBCDIC United States	500 - IBM EBCDIC International European
273 - IBM EBCDIC Germany F.R./ Austria	870 - IBM EBCDIC Multilingual (Latin 2, Eastern Europe)
277 - IBM EBCDIC Denmark, Norway	871 - IBM EBCDIC Iceland
278 - IBM EBCDIC Finland, Sweden	875 - IBM EBCDIC Greece
280 - IBM EBCDIC Italy	1025 - IBM EBCDIC Cyrillic, Multilingual
284 - IBM EBCDIC Spain/Latin America	1026 - IBM EBCDIC Turkish
285 - IBM EBCDIC United Kingdom	1047 - IBM EBCDIC Open Systems (Latin 1)
297 - IBM EBCDIC France	1112 - IBM EBCDIC Baltic Multilanguage
424 - IBM EBCDIC Israel (Hebrew)	65002 - Unicode (UTF-EBCDIC)



## Language

The LANGUAGE parameter specifies the National Language Support (NLS) environment. It sets the language of server error messages and can also be used to set the language of report titles if the Master File contains alternate language TITLE attributes. For more information, see the *Describing Data With WebFOCUS Language* manual.

The WebFOCUS Reporting Server Console, DataMigrator, and the Data Management console support the following languages.

(\* Localized versions)

- ☐ AMENGLISH
- ☐ ARABIC
- ☐ B-PORTUGUESE
- ☐ CROATIAN
- ☐ CZECH
- ☐ DANISH
- ☐ DUTCH
- ☐ ENGLISH
- ☐ ESTONIAN
- ☐ FINNISH
- ☐ FRENCH\*
- ☐ GERMAN\*
- ☐ GREEK
- ☐ HEBREW
- ☐ HUNGARIAN
- ☐ ITALIAN
- ☐ JAPANESE\*
- ☐ KOREAN
- ☐ LATVIAN

- ☐ LITHUANIAN
- ☐ NORWEGIAN
- ☐ POLISH
- ☐ PORTUGUESE
- ☐ ROMANIAN
- ☐ RUSSIAN
- ☐ S-CHINESE\*
- ☐ SLOVAK
- ☐ SPANISH\*
- ☐ SWEDISH
- ☐ T-CHINESE\*
- ☐ THAI
- ☐ TURKISH
- ☐ UKENGLISH

### WebFOCUS Client and ReportCaster

The following localized versions are available for the WebFOCUS Client and ReportCaster.

Translation and certification of the following languages is done by Information Builders:

#### **GROUP 1 (Full Translation)**

- ☐ Chinese (Traditional and Simplified)
- ☐ English (Australian, Canadian, United Kingdom, and United States)
- ☐ French (Canadian and Standard)
- ☐ German
- ☐ Spanish

#### **GROUP 2 (Partial Translation)**

Limited areas have been translated and tested by Information Builders Agents and Partners. Strings that translation has not been provided for will display in English.

- ☐ Brazilian Portuguese
- ☐ Italian
- ☐ Japanese
- ☐ Russian

### **GROUP 3 (Evaluating)**

Limited areas have been translated and tested by Information Builders Agents and Partners for demonstration purposes. Strings that translation has not been provided for will display in English. Contact Information Builders for instructions to enable.

- ☐ Korean

## **App Studio**

The following localized versions are available for App Studio.

- ☐ English
- ☐ French

## **WebFOCUS Open Portal Services - Supported Portals**

WebFOCUS Open Portal Services supports SharePoint 2013 on-premises, SharePoint 2016 on-premises and Office 365 Cloud, Azure Cloud, and any 100% JSR 268 compliant portal.

## **Release, Gen Maintenance, HotFix Availability Information WebFOCUS Client and App Studio**

Release, packaging, and maintenance release information for WebFOCUS Client and App Studio 8.2 Version 02 can be used in conjunction with the release information obtained from the installed WebFOCUS products to determine the installed release, Feature/Service Pack, Maintenance, or HotFix level of WebFOCUS. The Reporting Server 82m release and generation level information certified with the WebFOCUS Client and App Studio is also included in the table below.

Information Builders delivers WebFOCUS Client and App Studio fixes for specific customer issues and to improve product stability via Maintenance Releases. Each Maintenance Release is a single, cumulative package that can be applied as a full installation or as a service pack when upgrading.

Each Maintenance Release goes through our standard quality assurance validation process and targeted product area testing related to the fixes completed. Periodically, Information Builders replaces a Feature/Service Pack Release on the download site at My Downloads with a Maintenance Release that has been fully-certified. These releases are designated as Prod.

Other Gens of Maintenance Releases are made available on demand only. These Gens are Information Builders' mechanism for providing rapid turnaround fixes for customer-reported problems. They are production quality Gens, but they are only certified on customer-reported platforms. They must be requested for a customer by opening a case via InfoResponse Online. Alternatively, if you are a North American customer, you may call 1-800-736-6130 from 8:00 to 20:00 Eastern Time, Monday to Friday. If you are an international customer, contact your local office.

Information Builders publishes the "Description of Problems Fixed" in a given cumulative Maintenance Release. This information is in the table below, and available from the WebFOCUS Information Center. It is recommended that customers review this information in detail in order to determine the product areas impacted and the potential scope of testing that would be prudent to implement.

Release	WebFOCUS Client/ ReportCaster	App Studio	Reporting Server <i>Fixes</i>
8202M (December 2018) <i>Fixes</i>	wf120318a Gen 105	as120318a (English and French)	82M Gen 1155
8202M (June 2018) <i>Fixes</i>	wf061518a Gen 67	as061518a (English and French)	82M Gen 1141
8202M (February 27, 2018) <i>Fixes</i>	wf022718a Gen 24	as022718a (English and French)	82M Gen 1127
8202M (February 2018) <i>Fixes</i>	wf020118a Gen 14	as020118a (English and French)	82M Gen 1121
8202 <i>Fixes</i>	wf122017b Gen 143	as122017b (English and French)	82M Gen 1118

For information regarding earlier releases, see the [Technical Support](#) page.

## WebFOCUS Reporting and Microsoft Office Support

This topic provides details on the support of WebFOCUS reporting formats that generate output in Microsoft® Office products. It also provides usage considerations for hyperlinks that execute dynamic drill-down requests to procedures protected by WebFOCUS security.

### WebFOCUS Reporting Formats and Microsoft Product Association

The following table shows the WebFOCUS formats that create Microsoft Excel and PowerPoint reports, the Microsoft Office application associations, and the Windows operating system version availability.

WebFOCUS Formats	Microsoft Office Products	Windows Operating System
XLSX	Microsoft Office 2016	Windows 10
	Microsoft Office 2016, 2013, 2010, 2007	Windows 8
	Microsoft Excel Viewer 2007	Windows 7
PPTX	Microsoft Office 2016	Windows 10
	Microsoft Office 2016, 2013, 2010, 2007	Windows 8
	Microsoft PowerPoint Viewer 2010	Windows 7
EXL2K (Functionally stabilized)	Microsoft Office 2003, 2000	Windows XP Windows 2000
PPT (Functionally stabilized)	Microsoft Office 2003, 2000	Windows XP Windows 2000

For additional information on Microsoft Office releases compatible with Windows operating systems, see [Get Windows 10 App](#), which has a customized compatibility report for each PC, and provides a unified compatibility view of a PC, its onboard devices, and applications.

## WebFOCUS EXL2K and PPT Formats and Microsoft Office Suite Support

Due to file type and content security policy changes implemented by Microsoft, the WebFOCUS EXL2K and PPT formats are not supported with Microsoft Office 2013 and higher. The WebFOCUS XLSX and PPTX formats fully support the Microsoft Excel® XLSX and Microsoft PowerPoint® PPTX file types and content security policies of Office 2013 and higher.

## Microsoft Office 2003 Support

See [Get Windows 10](#), which has a customized compatibility report for each PC, and provides a unified compatibility view of a PC, its onboard devices, and applications. In WebFOCUS products, although you will still be able to start and work in Microsoft Office 2003 applications, Microsoft recommends that you upgrade to a later version of Office in order to continue to receive support and updates. If your organization uses Office 2003 with the Windows® XP operating system, see [Support for Windows XP ended](#) for information on the end of support for Microsoft Office 2003 and Windows XP SP3.

For information on opening, editing, and saving documents, workbooks, and presentations that were created in the later versions of Microsoft Excel and PowerPoint, see [Microsoft Office Compatibility Pack for Word, Excel, and PowerPoint File Formats](#).

## WebFOCUS EXL2K and PPT Formats and Microsoft Office Viewer Products Support

Microsoft Excel Viewer and PowerPoint Viewer are read-only products. They permit only the display and printing of Microsoft Excel and PowerPoint data. The WebFOCUS EXL2K and PPT reports are not supported in any release of the Microsoft Excel Viewer and the Microsoft PowerPoint Viewer. The WebFOCUS XLSX and PPTX formatted reports are supported and can be viewed with the Microsoft Excel Viewer and Microsoft PowerPoint Viewer, respectively.

Microsoft has released statements that older releases of the Microsoft Excel and PowerPoint Viewer are no longer supported. For information on the supported versions of Microsoft Office Viewer products, see [Supported versions of the Office viewers](#). The Microsoft Office Viewer is available from the [Microsoft Download Center](#).

## Usage Consideration When Using Hyperlinks to Run WebFOCUS Reports

Selecting a hyperlink in a WebFOCUS report, to execute a drill-down request to run a procedure on a secured WebFOCUS web environment, requires the security context or any session-related cookies to be inherited. Microsoft Office products do not natively inherit the security context or any session-related cookies created by a web-based application.

The following options are available to configure your web environment so that hyperlinks in WebFOCUS reports will be functional within Microsoft Office products.

- ❑ Configure WebFOCUS authentication to allow anonymous access. For more information, see the *WebFOCUS Security and Administration* manual.
- ❑ Use SSO with IIS/Tomcat Integrated Windows Authentication. Renegotiation occurs automatically and the Excel and PowerPoint reports display correctly.
- ❑ As of WebFOCUS Release 8, the Remember Me feature can be enabled on the Sign-in page. If the end user uses the Remember Me feature, a persistent cookie is used. For more information on how Microsoft Office products handle session-related information, see [Error message when clicking hyperlink in Office: "Cannot locate the Internet server or proxy server."](#)

## WebFOCUS DOC Format

The WebFOCUS standard for styled and printable documents is the Acrobat® PDF format. The WebFOCUS PDF format creates Acrobat PDF documents. The WebFOCUS DOC format produces a character-based file, not a Microsoft Word document.

## Recommended Reading

[WebFOCUS EXL07/XLSX Format Supported Features Release Roadmap](#)

[WebFOCUS PPTX Format Supported Features Release Roadmap](#)

[Microsoft Windows Support Statement for WebFOCUS](#)

*Saving Report Output in Excel XLSX Format* topic in the *Creating Reports for WebFOCUS Language* manual, available from the [WebFOCUS 8 Technical Library](#).

*Saving and Reusing Your Report Output* topic in the *Creating Reports for WebFOCUS Language* manual, available from the [WebFOCUS 8 Technical Library](#).

## Additional Resources

The following Technical Support pages contain additional resources that you can reference, but are not specific to your release.

- ❑ [\*Advisories\*](#)
- ❑ [\*Compatibility Notices\*](#)
- ❑ [\*Release Availability\*](#)
- ❑ [\*Support Notices\*](#)
- ❑ [\*Supported Operating Systems for the WebFOCUS Client\*](#)
- ❑ [\*WebFOCUS 8.2 Java, Servlet, and Install Requirements\*](#)
- ❑ [\*WebFOCUS 8.2 WebFOCUS and App Studio Consolidated Features\*](#)
- ❑ [\*WebFOCUS EXL07/XLSX Format Supported Features Release Roadmap\*](#)
- ❑ [\*WebFOCUS Release 8 Chart Formats Statement\*](#)
- ❑ [\*WebFOCUS Server Support Statement for JVM\*](#)



## WebFOCUS 8.2.02 Release Considerations

---

These topics provide release considerations and product changes for WebFOCUS Release 8.2.02 with Reporting Server 82M, and maintenance releases.

Before reading this documentation, Information Builders recommends reviewing the release considerations for all intermediate releases, as well as the *WebFOCUS Release Notes*, which includes known issues and product limitations. These documents, which are periodically updated as needed, are located in the Technical Library:

<https://techsupport.informationbuilders.com/public/tc-library.html>

### In this chapter:

- ☐ [Active Technologies](#)
  - ☐ [App Studio](#)
  - ☐ [Business Intelligence Portal](#)
  - ☐ [Autoprompt](#)
  - ☐ [Charts and Graphs](#)
  - ☐ [InfoAssist+](#)
  - ☐ [National Language Support](#)
  - ☐ [Online Analytical Processing \(OLAP\)](#)
  - ☐ [ReportCaster](#)
  - ☐ [WebFOCUS Language](#)
  - ☐ [Magnify Search](#)
  - ☐ [Installation](#)
  - ☐ [WebFOCUS Infrastructure and Security](#)
- 

### Active Technologies

The following are release considerations and product changes for Active Technologies (WebFOCUS Reporting Server Release 82).

If you are working with an AHTML chart that does not have the new chart properties (specifically, non-bucket AHTML charts), you will encounter problems if you change the chart type to one of the following chart types using the Advanced Chart tool at run time:

- ☐ Tag Cloud
- ☐ Funnel
- ☐ Pyramid

- ☐ Waterfall
- ☐ Histogram
- ☐ Radar Line
- ☐ Radar Area
- ☐ 3D Area

By default, these chart types are hidden in the Advanced Chart tool when the original chart is an AHTML bucket chart. These chart types are available under the following circumstances:

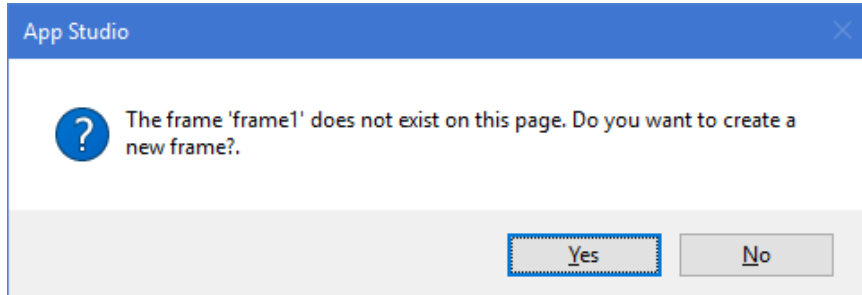
- ☐ When the original chart is a non-bucket chart
- ☐ When the chart is created from a tabular report

## App Studio

The following are release considerations and product changes for App Studio.

- ☐ When procedures with parameters have been referenced in an HTML page, two new options are included at the base of the New Parameters dialog box:
  - ☐ Insert Run Defer button.
  - ☐ Insert Schedule button.
- ☐ In Release 8.2 Version 02, a blank value (no value) has replaced \_FOC\_NULL in HTML controls at design time. In prior releases, when the display value was \_FOC\_NULL, \_FOC\_NULL was shown in controls on the design canvas. The display value \_FOC\_NULL is now changed to All in both design time and run time controls of HTML pages.
- ☐ In Release 8.2 Version 01 and Release 8.2 Version 01M, when you type a frame name in the Target/Template Name field in the Tasks & Animations panel, a new frame is drawn in the HTML page, if the frame does not exist.

In Release 8.2 Version 02, you can call a previously-created frame outside of the current HTML page. When you type a frame name in the Target/Template Name field in the Tasks & Animations panel, if the frame does not exist, a Frame dialog box displays, as shown in the following image.



The following options are available:

- ☐ **Yes.** Draws the frame on the page.
- ☐ **No.** Does not draw the frame on the page.
- ☐ In Release 8.2 Version 02, you can either double click a Button component to change the text or use the Text property in the Properties panel. In earlier releases, you were only able to change the text by entering the value in the Value property in the Properties panel. The Value property is no longer used to change the text.  
  
For Tabs, Windows, and Accordions, you can either double click and change the header text or enter a value in the Selected Page: Title property.
- ☐ In Release 8.2 Version 02, in the Document canvas:
  - ☐ HTML5 charts contain syntax that is currently not supported on the Document canvas, unless the output format is active PDF or active report.
  - ☐ In the Domains area, when you reference or import an existing chart procedure, the Open File dialog box will only show charts that contain an output format of active PDF or active report.
  - ☐ In the Data Servers or Projects (optional) area, when you reference or import an existing chart procedure, selecting an output format other than active PDF or active report may result in a *not enough data to draw chart* message.
- ☐ In Release 8.2 Version 02, Dialogue Manager labels support up to 64 characters. In previous releases, the limit for Dialogue Manager labels is 12 characters.

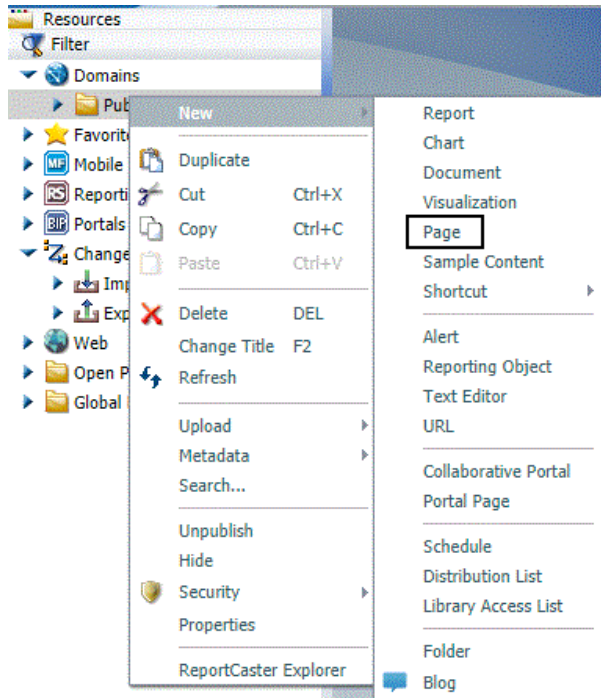
- ❑ In Release 8.2 Version 02, in Business View Plus (BV+):
  - ❑ The OLAP user interface is not available in App Studio for Master Files that contain the BV\_NAMESPACE=ON attribute. The OLAP user interface is available for legacy Master Files and Master Files that contain the BV\_NAMESPACE=OFF attribute.
  - ❑ Sort objects are not supported for Business View Plus (BV+).

## Business Intelligence Portal

The following are release considerations and product changes for the Business Intelligence Portal:

- ❑ As of WebFOCUS Release 8.2 Version 02, basic and collaborative portals are enabled, by default. Administrators can disable them by opening the Administration Console and clearing the corresponding check box, under the BI Portal settings.
- ❑ As of WebFOCUS Release 8.2 Version 02, in the Portal Designer or Page Designer, when you select a container, the title no longer shows on the Properties tab. You can still view or edit the title on the Title tab.

- ❑ As of WebFOCUS Release 8.2 Version 02, a new *Page* option is available from the shortcut menu, when you right-click a domain or folder in the Resources tree. This option is highlighted in the following image, and appears between Visualization and Sample Content.



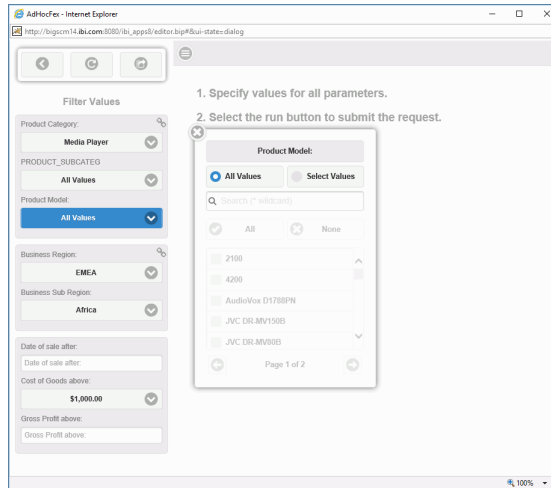
This new option launches the WebFOCUS Designer. Additionally, the *Page* option that was available in WebFOCUS Release 8.2 Version 01M, is renamed to *Portal Page*. This option launches the *Page Designer*, where you can create collaborative portal pages.

## Autoprompt

The following are release considerations and product changes for Autoprompt:

- ❑ As of WebFOCUS Release 8.2, parameter-based simple filters are required to have a specified default value or a value entered by the user. If this validation improvement impacts your existing reports that use the Autoprompt facility, contact Customer Support for assistance.

- ❑ The dynamic multi-select selection list windows in the Responsive Autoprompt Interface now display an X icon in the upper-left corner, as shown in the following image. The image on this new icon indicates that clicking it will close the list and return the user to the main autoprompt interface window. This icon appears in the upper-left corner of all multi-select selection list windows, regardless of the number of choices made available in the filter.



- ❑ The WebFOCUS Client processing for reports with formats that have the Redirection Save Report option enabled (yes) no longer automatically appends the date and time the report is created to the report file name for requests that specify a name for the report file. As a result of this change, the WebFOCUS Client now creates a report file using the file name specified by the report request.

The PCHOLD AS *filename* option specifies a report file name within a report request.

The syntax for PCHOLD in a report request is:

```
ON TABLE PCHOLD [AS filename] [FORMAT fmt]
```

where:

[AS *filename*]

Specifies a name for the PCHOLD file.

[FORMAT *fmt*]

Specifies the format of the PCHOLD file. For example, XLSX.

For more information on creating reports with the PCHOLD command, see the *Creating Reports with WebFOCUS Language* manual.

For more information on the WebFOCUS Client Redirection settings, see the *WebFOCUS Security and Administration* manual.

**Note:** Some applications, such as Microsoft Excel®, require unique names for every opened file. The following technique can be used to accommodate this requirement when a specific file name is required. It uses amper variables to obtain the time and date the report is created by the Reporting Server, specifies a file name with the date and time appended, and assigns that file name to the report file.

```
-SET &TIME = STRIP(8,&TOD,',' ,A8);
-SET &FNAME = OUTPUT_ | &YYMD | _ | &TIME;
TABLE FILE CAR
BY CAR
ON TABLE PCHOLD AS &FNAME FORMAT XLSX
END
```

## Charts and Graphs

The following is a release consideration and product change for WebFOCUS charts and graphs.

### HTML5 Upgrade

The following is a release consideration and product change for HTML5:

- ❑ If a tagcloud chart does not have a measure in the color attribute category, the series 0 color is now used. This is a change from prior releases, so the chart may look different, but it is consistent with the other chart types.

### InfoAssist+

The following are release considerations and product changes for InfoAssist+.

### General Enhancements

The following are general release considerations:

- ❑ When editing an existing procedure within InfoAssist+, the application path is set for the procedure when it should be inherited.
- ❑ When converting a bar, line, area, pie (or ring pie) chart with a field in the Color field container to a grid, the Color field container is converted and placed in the Rows field container of the grid. Any fields on the Horizontal Axis field container display in the Columns field container.

- ❑ If you indicate the same field twice for inclusion in a report and then create a HOLD file, the HOLD data pane differentiates the second field by using the master file Alias name for the HOLD file. For example, E03.
- ❑ To support the easy transformation of alpha (text) fields containing numeric values for use within a WebFOCUS report, the assignment of text values to numeric formatted fields will no longer return an error. This means that when working with values in the Define, Compute, or Filter dialog boxes in InfoAssist+, you can assign an alpha (text) value to a field with a numeric format without error or validation.

When working with Defines and Computes, any alpha (text) value will be transformed into a zero in the numeric field. The following message displays:

(FOC1130) FORMAT CONVERSION ERROR FIELD/KEY

This is a warning, rather than an error.

## National Language Support

The following is an upgrade consideration and product change for National Language Support:

- ❑ As of WebFOCUS Release 8.2 Version 02, the two-character Language Code used by the WebFOCUS Client was expanded to include the full five-character ISO Country Code that accommodates multiple locales for a particular language. For more information about ISO Country Codes, see [https://www.w3schools.com/tags/ref\\_country\\_codes.asp](https://www.w3schools.com/tags/ref_country_codes.asp).

When the <SET>IBIWF\_language(PASS) command is added to the Custom Settings page on the Administration Console Configuration tab, the WebFOCUS Client sends the language code from the current user session along with requests to the Reporting Server.

Applications that evaluate the &IBIWF\_language amper variable require remediation to enable them to evaluate the combined ISO Language Code and Country Code. For example, en-GB for English, United Kingdom.

Report requests that display the value assigned to the &IBIWF\_language amper variable, such as those that include it in the heading of a report, are expected to display the full five-character Language Code, such as en-GB.



## Online Analytical Processing (OLAP)

The following is a release consideration and product change for Online Analytical Processing (OLAP):

- ❑ The OLAP Control Panel Save Report option is available when the OLAP request (FEX) is run from or passes the repository (WFC) path and the user is authorized to create content in the repository path. The OLAP Save Report option is not available to the public user and when running an OLAP request (FEX) located in a Reporting Server application directory or passing a Reporting Server application directory path.

## ReportCaster

The following are release considerations and product changes for ReportCaster:

- ❑ When using the Task tab of the Advanced Scheduling tool, if you click the *New* button, the default task that displays is now WebFOCUS Report. The former default task was WebFOCUS Server procedure.
- ❑ The API functionality DSTBULK is not available. DSTBULK requests will fail and return a servlet execution error (code 11).
- ❑ As of Release 8.2 Version 0.2, editing the title of an existing schedule does not change the content in the Email Subject field of the schedule. New emails distributed from the edited schedule will continue to contain the same subject information as older emails, allowing you to easily identify all emails distributed from the same schedule.
- ❑ In order to enhance ReportCaster performance, supplemental indexes must be added to the ReportCaster database by running the EMSREPD1\_INDEXES1.sql script.

## WebFOCUS Language

The following are release considerations and product changes for the WebFOCUS reporting language.

### Change to Default Processing of Joins to Flat Files

The default value for the ENGINE INT CACHE SET command has changed from OFF to ON.

In fixed format or delimited sequential files, any field can be a cross-referenced field. However, both the host and cross-referenced file must be retrieved in ascending order on the named (key) fields, if the command ENGINE INT CACHE SET OFF is in effect. In this situation, if the data is not in the same sort order, errors are displayed and a many-to-many join is not supported.

However, if ENGINE INT CACHE SET ON is in effect, the files do not have to be in ascending order and a many-to-many join is supported. ON is now the default value. Therefore, the number of rows returned from a join may be different than in the prior release.

You can revert to the behavior from prior releases by including ENGINE INT CACHE SET OFF in edasprof.

A delimited file used as the cross-referenced file in the join must consist of only one segment. If the join is based on multiple fields, a fixed format sequential file must consist of a single segment. If the cross-referenced fixed format sequential file contains only one segment, the host file must have a segment declaration.

## Change to Use of Prefix in JOIN AS Commands

In a series of JOIN commands without tag names, when the same file is used multiple times, the join name is used as a prefix for duplicate field names. One example of this type of JOIN sequence is a recursive join.

In prior releases, if you prefixed a field with a join name within a JOIN command, the JOIN was added to the table of joins whether the need for the prefixed name could be established or not. If the prefixed name could be resolved at run time, the request would run without error. In the current release, unresolved prefixed names in a JOIN command generate an error message and terminate processing as soon as the JOIN command is issued.

The following request produces three data sources:

- ☐ File ALLEMP contains employee IDs and Manager IDs.
- ☐ File HOLDEMP contains employee IDs and employee names.
- ☐ File HOLDZIP contains employee IDs and zip codes.

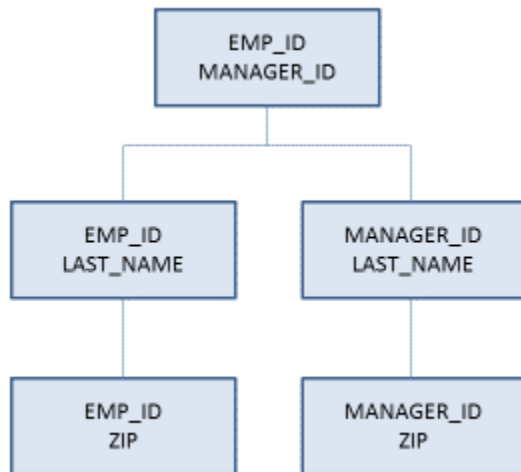
The following request creates these data sources.

```

DEFINE FILE EMPLOYEE
ZIP/A20=GETTOK(ADDRESS_LN3,20,-1,' ',20,'A20');
END
TABLE FILE EMPLOYEE
PRINT LAST_NAME
  COMPUTE MANAGER_ID/A9=IF MANAGER_ID NE ' ' AND
    DEPARTMENT EQ LAST DEPARTMENT THEN MANAGER_ID ELSE EMP_ID;
BY DEPARTMENT
ON TABLE HOLD AS ALLEMP
END
TABLE FILE EMPLOYEE
PRINT SEG.EMP_ID
BY EMP_ID
ON TABLE HOLD AS HOLDEMP FORMAT FOCUS INDEX EMP_ID
END
TABLE FILE EMPLOYEE
SUM  ZIP
BY EMP_ID
ON TABLE HOLD AS HOLDZIP FORMAT FOCUS INDEX EMP_ID

```

JOIN commands will be used to generate the following structure using these files.



The following request generates the JOIN structure and issues a TABLE request against it.

```
JOIN EMP_ID IN ALLEMP TO EMP_ID IN HOLDEMP AS J1
JOIN J1EMP_ID IN ALLEMP TO EMP_ID IN HOLDZIP AS J3
JOIN MANAGER_ID IN ALLEMP TO EMP_ID IN HOLDEMP AS J2
JOIN J2EMP_ID IN ALLEMP TO EMP_ID IN HOLDZIP AS J4
TABLE FILE ALLEMP
PRINT EMP_ID MANAGER_ID
      LAST_NAME J2LAST_NAME
      J3ZIP J4ZIP
ON TABLE SET PAGE NOLEAD
ON TABLE SET STYLE *
GRID=OFF,$
ENDSTYLE
END
```

Running the request in the current release generates the following message.

```
(FOC370) THE FIELDNAME USED IN JOIN CANNOT BE FOUND IN THE FILE: J1EMP_ID
BYPASSING TO END OF COMMAND
```

In prior releases, this request would run without error. However, since the need for the prefixed field name J1EMP\_ID in JOIN J3 was not established by the time that JOIN command was issued, in the current release the error is produced and the request is terminated.

Now, reverse the second and third JOIN commands.

```
JOIN CLEAR *
JOIN EMP_ID IN ALLEMP TO EMP_ID IN HOLDEMP AS J1
JOIN MANAGER_ID IN ALLEMP TO EMP_ID IN HOLDEMP AS J2
JOIN J1EMP_ID IN ALLEMP TO EMP_ID IN HOLDZIP AS J3
JOIN J2EMP_ID IN ALLEMP TO EMP_ID IN HOLDZIP AS J4
TABLE FILE ALLEMP
PRINT EMP_ID MANAGER_ID
      LAST_NAME J2LAST_NAME
      J3ZIP J4ZIP
ON TABLE SET PAGE NOLEAD
ON TABLE SET STYLE *
GRID=OFF,$
ENDSTYLE
END
```

The prefixed field name J1EMP\_ID is now needed to establish whether the EMP\_ID field referenced in JOIN J3 refers to the EMP\_ID field from JOIN J1 or from JOIN J2. Similarly, a prefixed EMP\_ID field is needed in JOIN J4. The output is shown in the following image.

<u>EMP_ID</u>	<u>MANAGER_ID</u>	<u>LAST_NAME</u>	<u>J2LAST_NAME</u>	<u>J3ZIP</u>	<u>J4ZIP</u>
112847612	112847612	SMITH	SMITH	10001	10001
117593129	112847612	JONES	SMITH	07073	10001
219984371	112847612	MCCOY	SMITH	10001	10001
326179357	112847612	BLACKWOOD	SMITH	11210	10001
543729165	112847612	GREENSPAN	SMITH	07300	10001
818692173	112847612	CROSS	SMITH	11354	10001
071382660	071382660	STEVENS	STEVENS	10001	10001
119265415	071382660	SMITH	STEVENS	10039	10001
119329144	071382660	BANNING	STEVENS	11520	10001
123764317	071382660	IRVING	STEVENS	10001	10001
126724188	071382660	ROMANS	STEVENS	11520	10001
451123478	071382660	MCKNIGHT	STEVENS	07068	10001

## MISSING ON NEEDS SOME Incorrectly Evaluates to MISSING

A request that creates a temporary field (either DEFINE or COMPUTE) with MISSING ON NEEDS SOME is evaluating to MISSING when there is an IF expression that contains two MISSING ON fields where one of them is MISSING.

The IF is testing for EQ 0 instead of EQ MISSING, and optimization improvements have made the test for the second field unnecessary. Change the IF to test for EQ MISSING.

## Limit on Total Space Allowed for Headings and Footings Removed

The limit on the total space allowed for Headings, Footings, Subheadings, and Subfootings has been lifted, with the space now being allocated dynamically. The following message will no longer be generated.

(FOC021) THE MAXIMUM HEADING/FOOTING SIZE HAS BEEN EXCEEDED

## Spacing in EXL2K Formatted Reports With Headings or Footings

In EXL2K formatted reports, with headings or footings containing multiple items that are separated by spot markers without spaces, the spot marker adds an additional space between the items within the text in the cell. The workaround is to use XLSX formatted reports, instead.

## Increased Number of ACROSS Columns

The increased number of ACROSS columns to 1024 may exceed browser support for colspans in a table. Prior to the increased limit, users received a WebFOCUS message. Now, the table is created, but may present with issues due to browser limitations.

## Change to the HTMLCSS Command (HTML/DHTML)

The following are release considerations and product changes for HTMLCSS:

- ☐ The default value for the HTMLCSS parameter has changed to ON. All core WebFOCUS styling is activated by this change.
  - ☐ Due to this change in the default, you must add the SET HTMLCSS=OFF command to the procedure to provide continued support for external cascading style sheet styling.
  - ☐ When HTMLCSS=ON, and grids are enabled, the inner gridlines inherit the color applied to the font defined in each cell.
  - ☐ When HTMLCSS=ON and SQUEEZE=OFF, the em font measurement is used. The em font measurement is based on the point size of the font, which is the height of the character set including ascenders, descenders, and gap spacing. An em font measurement is wider than the largest letter in the font, usually a capital M or W, because it is not a measurement of width. Given these font measurement considerations, for requests with SQUEEZE=OFF, the following is recommended for the column width calculation to be the largest column value or the width of the column title, whichever is larger:
    - ☐ Use proportional font.
    - ☐ Add the SET HTMLCSS=OFF command to the procedure.
  - ☐ When HTMLCSS=OFF and SQUEEZE=OFF, use a proportional font, since each proportional font character is the same size. The column width will be the largest column width calculation or the width of the column title, whichever is larger.

## Magnify Search

The following is a release consideration and product change for Magnify Search.

### Utilizing the Lucene Facet Count Feature

As of Release 8.2 Version 02, Magnify Search uses the Lucene Facet Count feature. As a result of this change, the facet count is based on the entire index population and not just the returned search count.

## Installation

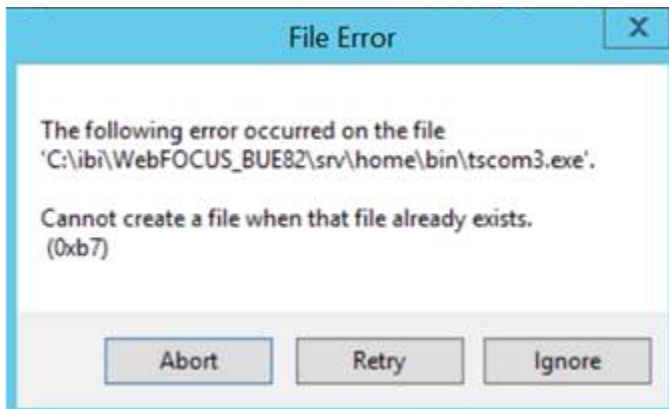
The following are release considerations for installation:

### **Anti-Virus and Malware Protection Applications During an Installation, Upgrade, or Uninstall**

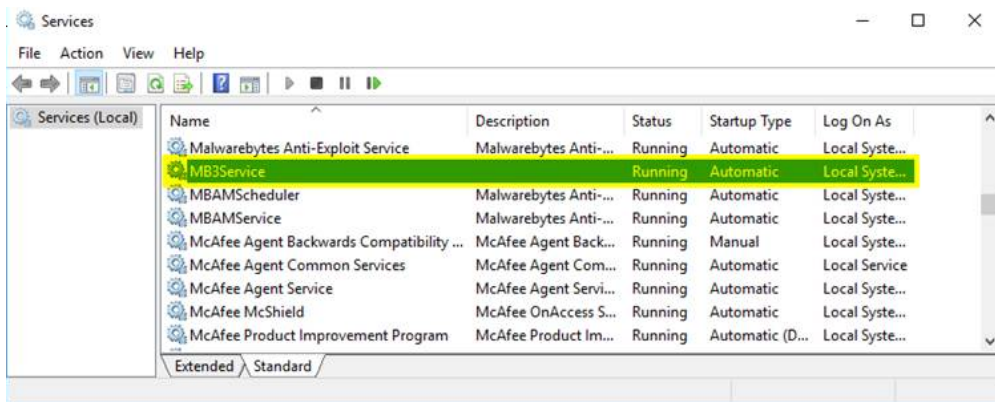
For new installations, upgrades, and uninstalls, it is recommended to turn off any anti-virus and anti-malware protection programs you have for the duration of the installation, upgrade, or uninstall process, as these applications may block, interfere, or slow down the installation, upgrade, or uninstall process, and in turn, possibly cause a failure.

Restart your protection programs when the installation, upgrade, or uninstall completes. If you chose to leave protection programs active and an error occurred, the protection logs should be checked and the installation, upgrade, or uninstall repeated after protection deactivation. As there are many protection vendors, we cannot be specific as to what to expect in logs or during a failure, aside from the error likely being a *file in use* error.

If you are using Malwarebytes Anti-Ransomware, and during upgrade installations of the WebFOCUS Reporting Server, WebFOCUS Business User Edition, or App Studio, you receive a *File Error* similar to the following image, this is an indication that files are locked by the Malwarebytes software.



To proceed, open the Windows Services application and stop the Malware service, *MB3Service*, as shown in the following image.



Return to the installation program and click *Retry* on the File Error dialog box.

## WebFOCUS Infrastructure and Security

The following are release considerations and product changes for WebFOCUS security:

- ❑ Cross-Site Request Forgery (CSRF) tokens help remediate CSRF attacks that attempt to persuade an end user to execute unwanted actions on a web application in which they are currently authenticated. In order to include a CSRF token within -HTMLFORM Dialogue Manager Procedures and the creation of HTML reports, an administrator must assign the IBI\_CSRF\_Token\_Name and IBI\_CSRF\_Token\_Value variables to the site.wfs file by typing them in the Custom Settings page and saving the updates. Individual report requests must also include references to these variables in an input tag within the -HTMLFORM BEGIN/END commands of -HTMLFORM Dialogue Manager Procedures.
- ❑ To accommodate the increased functionality of the Administration Console in WebFOCUS Release 8.2, the single-tab Administration Console was expanded to four tabs: Configuration, Security, ReportCaster, and Diagnostics. All settings and features were distributed to these four tabs based on their relevance to the activity identified by the tab name. In addition, an expanded range of features was assigned to the Security tab to enable administrators to configure all security-related settings within the Administration Console.



- ❑ Release 8.2 Version 02 displays a new Home Page that was developed for this version, by default. You can change this default behavior and direct WebFOCUS to open the Legacy Home Page that was developed for Release 8.2 Version 01 or a Custom Welcome Page instead. To do so, update the value assigned to the Redirect `/ibi_apps` to setting, located on the BI Portal page of the Administration Console Configuration tab, by selecting the option for either page. In addition, the Default Welcome Page setting that appeared on the BI Portal page of the Administration Console Configuration tab in WebFOCUS Release 8.2 Version 01 now appears in the `/ibi_apps` field that is located underneath the Custom Welcome Page option of the new Redirect `/ibi_apps` to setting.
- ❑ The default version of regular expressions used in Access Control Templates can be enhanced to include characters from the following Client Code Pages that use extended character sets:
  - ❑ 1252 - Western European (includes all single byte characters)
  - ❑ 942 - Japanese (JA)
  - ❑ 949 - Korean (KO)
  - ❑ 946 - Simplified Chinese (ZH)
  - ❑ 10948 - Traditional Chinese (TW)

If you use a Client Code Page that includes an extended character set, replace the expression `\w+` with the expression that identifies the full range of extended characters included in your Client Code page. If you do not make this adjustment, groups whose names use these extended characters will be excluded from the access control template. For more information, see the *Access Control Template Regular Expressions and Group ID Patterns* topic in the *Security and Administration* manual.

- ❑ As of Release 8.2 Version 02, WebFOCUS discontinued support for the OpenID pre-authentication method, and replaced it with support for the newer version of this method, OpenID Connect. As a result of this change, we recommend that all customers who use OpenID pre-authentication replace it with OpenID Connect or another method of secure pre-authentication.
- ❑ In WebFOCUS Release 8.2 Version 02, the default value assigned to the session identifier setting changed from `JSESSIONID` to `WF-JSESSIONID`. This default value can be replaced by a customized value, if necessary. To do so, open the `web.xml` file, located at:

`drive:\ibi\WebFOCUS82\webapps\webfocus\WEB-INF\`

In the session-config section, type the new value in the name attribute of the cookie-config tag.

- ❑ In WebFOCUS Release 8.2, Roles in the Security Center dialog box were updated as follows:

**DomainDeveloper.** Added the Portal Page Designer privilege (opPageDesigner) and the Create Portal (opCreatePortal) privilege to the Application Development privilege category. The Create Portal privilege applies only to new portals that are created under a domain in Release 8.2.

**DomainGroupAdmin.** Removed the Create Portal privilege (opCreatePortal) from the Application Development privilege category.

These changes:

- ❑ Move the privilege to create portals within a domain from Group Administrators to Developers.
- ❑ Make the privilege to design portal pages within a domain available to Developers.



# Feedback

*Customer success is our top priority. Connect with us today!*

---

Information Builders Technical Content Management team is comprised of many talented individuals who work together to design and deliver quality technical documentation products. Your feedback supports our ongoing efforts!

You can also preview new innovations to get an early look at new content products and services. Your participation helps us create great experiences for every customer.

To send us feedback or make a connection, contact Sarah Buccellato, Technical Editor, Technical Content Management at [Sarah\\_Buccellato@ibi.com](mailto:Sarah_Buccellato@ibi.com).

To request permission to repurpose copyrighted material, please contact Frances Gambino, Vice President, Technical Content Management at [Frances\\_Gambino@ibi.com](mailto:Frances_Gambino@ibi.com).



# WebFOCUS

WebFOCUS Release Guide  
Release 8.2 Version 02M



DN4501643.0618

**Information  
Builders**

Information Builders, Inc.  
Two Penn Plaza  
New York, NY 10121-2898