

WebFOCUS

Using the DataDirect ODBC Driver for
Hyperstage

Active Technologies, EDA, EDA/SQL, FIDEL, FOCUS, Information Builders, the Information Builders logo, iWay, iWay Software, Parlay, PC/FOCUS, RStat, Table Talk, Web390, WebFOCUS, WebFOCUS Active Technologies, and WebFOCUS Magnify are registered trademarks, and DataMigrator and Hyperstage are trademarks of Information Builders, Inc.

Adobe, the Adobe logo, Acrobat, Adobe Reader, Flash, Adobe Flash Builder, Flex, and PostScript are either registered trademarks or trademarks of Adobe Systems Incorporated in the United States and/or other countries.

Due to the nature of this material, this document refers to numerous hardware and software products by their trademarks. In most, if not all cases, these designations are claimed as trademarks or registered trademarks by their respective companies. It is not this publisher's intent to use any of these names generically. The reader is therefore cautioned to investigate all claimed trademark rights before using any of these names other than to refer to the product described.

Copyright © 2017, by Information Builders, Inc. and iWay Software. All rights reserved. Patent Pending. This manual, or parts thereof, may not be reproduced in any form without the written permission of Information Builders, Inc.

Contents

Preface	5
Documentation Conventions	5
Related Publications	6
Customer Support	6
Information You Should Have	7
User Feedback	8
Information Builders Consulting and Training	8
1. Configuring the DataDirect ODBC Driver for Hyperstage	9
Necessary Files for Configuration	9
Summary of Configuration Steps	9

Preface

This technical content describes the steps that you need to configure the DataDirect ODBC driver for Hyperstage.

How This Manual Is Organized

This manual includes the following chapters:

Chapter/Appendix	Contents
1 Configuring the DataDirect ODBC Driver for Hyperstage	Describes the steps needed to configure the DataDirect ODBC driver for Hyperstage.

Documentation Conventions

The following table describes the documentation conventions that are used in this manual.

Convention	Description
<code>THIS TYPEFACE</code> or <code>this typeface</code>	Denotes syntax that you must enter exactly as shown.
<i>this typeface</i>	Represents a placeholder (or variable) in syntax for a value that you or the system must supply.
<u>underscore</u>	Indicates a default setting.
<i>this typeface</i>	Represents a placeholder (or variable), a cross-reference, or an important term. It may also indicate a button, menu item, or dialog box option that you can click or select.
Key + Key	Indicates keys that you must press simultaneously.
{ }	Indicates two or three choices. Type one of them, not the braces.
[]	Indicates a group of optional parameters. None are required, but you may select one of them. Type only the parameter in the brackets, not the brackets.

Convention	Description
	Separates mutually exclusive choices in syntax. Type one of them, not the symbol.
...	Indicates that you can enter a parameter multiple times. Type only the parameter, not the ellipsis (...).
. . .	Indicates that there are (or could be) intervening or additional commands.

Related Publications

Visit our Technical Content Library at <http://documentation.informationbuilders.com>. You can also contact the Publications Order Department at (800) 969-4636.

Customer Support

Do you have questions about this product?

Join the Focal Point community. Focal Point is our online developer center and more than a message board. It is an interactive network of more than 3,000 developers from almost every profession and industry, collaborating on solutions and sharing tips and techniques. Access Focal Point at <http://forums.informationbuilders.com/eve/forums>.

You can also access support services electronically, 24 hours a day, with InfoResponse Online. InfoResponse Online is accessible through our website, <http://www.informationbuilders.com>. It connects you to the tracking system and known-problem database at the Information Builders support center. Registered users can open, update, and view the status of cases in the tracking system and read descriptions of reported software issues. New users can register immediately for this service. The technical support section of www.informationbuilders.com also provides usage techniques, diagnostic tips, and answers to frequently asked questions.

Call Information Builders Customer Support Services (CSS) at (800) 736-6130 or (212) 736-6130. Customer Support Consultants are available Monday through Friday between 8:00 a.m. and 8:00 p.m. EST to address all your questions. Information Builders consultants can also give you general guidance regarding product capabilities. Please be ready to provide your six-digit site code number (xxxx.xx) when you call.

To learn about the full range of available support services, ask your Information Builders representative about InfoResponse Online, or call (800) 969-INFO.

Information You Should Have

To help our consultants answer your questions effectively, be prepared to provide the following information when you call:

- Your six-digit site code (xxxx.xx).
- Your WebFOCUS configuration:
 - The front-end software you are using, including vendor and release.
 - The communications protocol (for example, TCP/IP or HLLAPI), including vendor and release.
 - The software release.
 - Your server version and release. You can find this information using the Version option in the Web Console.
- The stored procedure (preferably with line numbers) or SQL statements being used in server access.
- The Master File and Access File.
- The exact nature of the problem:
 - Are the results or the format incorrect? Are the text or calculations missing or misplaced?
 - Provide the error message and return code, if applicable.
 - Is this related to any other problem?
- Has the procedure or query ever worked in its present form? Has it been changed recently? How often does the problem occur?
- What release of the operating system are you using? Has it, your security system, communications protocol, or front-end software changed?
- Is this problem reproducible? If so, how?
- Have you tried to reproduce your problem in the simplest form possible? For example, if you are having problems joining two data sources, have you tried executing a query containing just the code to access the data source?

- Do you have a trace file?
- How is the problem affecting your business? Is it halting development or production? Do you just have questions about functionality or documentation?

User Feedback

In an effort to produce effective documentation, the Technical Content Management staff welcomes your opinions regarding this document. You can contact us through our website <http://documentation.informationbuilders.com/connections.asp>.

Thank you, in advance, for your comments.

Information Builders Consulting and Training

Interested in training? Information Builders Education Department offers a wide variety of training courses for this and other Information Builders products.

For information on course descriptions, locations, and dates, or to register for classes, visit our website (<http://education.informationbuilders.com>) or call (800) 969-INFO to speak to an Education Representative.

Configuring the DataDirect ODBC Driver for Hyperstage

The DataDirect ODBC Driver for Hyperstage is an alternative to the default JDBC driver. You can use this driver when large volumes of data need to be retrieved from Hyperstage in a single request.

In this chapter:

- [Necessary Files for Configuration](#)
- [Summary of Configuration Steps](#)

Necessary Files for Configuration

You need the following files to configure the DataDirect ODBC Driver for Hyperstage:

- Hyperstage_datadirect.zip, which contains the following files:
 - DATADIRECT_CONNECT64_ODBC_7.1.6_WIN_64_BRAND.zip
 - Sample_edasprof_with_DataDirect_ODBC_Settings.txt
 - datadirecteg.exe

To obtain these files, please contact Information Builders Support.

Summary of Configuration Steps

This tutorial guides you through the steps that you need to configure the DataDirect ODBC driver for Hyperstage. You must complete the following steps to successfully configure the driver.

1. Extract *Hyperstage_datadirect.zip*.
2. Extract *DATADIRECT_CONNECT64_ODBC_7.1.6_WIN_64_BRAND.zip*.
 - a. The zip file contains the Connect64_for_ODBC71 directory, and about 4674 files and directories, including drivers, utilities, and Help files.
 - b. You can extract Connect64_for_ODBC71 to any directory accessible to the Reporting Server. You can also rename the directory, if needed.
 - c. Configure the driver for Windows using datadirecteg.exe, which is a command line script that updates the Windows Registry for ODBC.
3. Remove the existing Hyperstage (PG) Adapter, if configured.

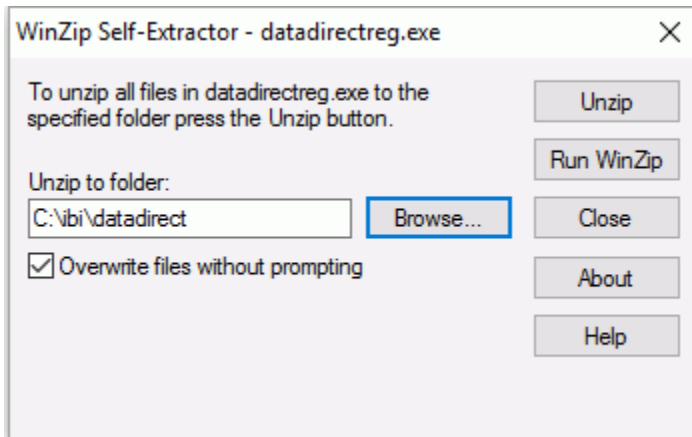
The Reporting Server can only have one Hyperstage (PG) Adapter installed at a time. If *Hyperstage (PG) JDBC Adapter* or *Hyperstage (PG) ODBC PostgreSQL* is configured, it must be removed before the ODBC driver can be configured.

4. Configure the Hyperstage (PG) ODBC DataDirect Adapter by doing the following:
 - a. Add Hyperstage (PG) ODBC DataDirect Adapter
 - b. Add additional ENGINE settings to the profile where the Adapter is configured.
5. Test the Adapter.

Procedure: How to Configure the DataDirect ODBC Driver

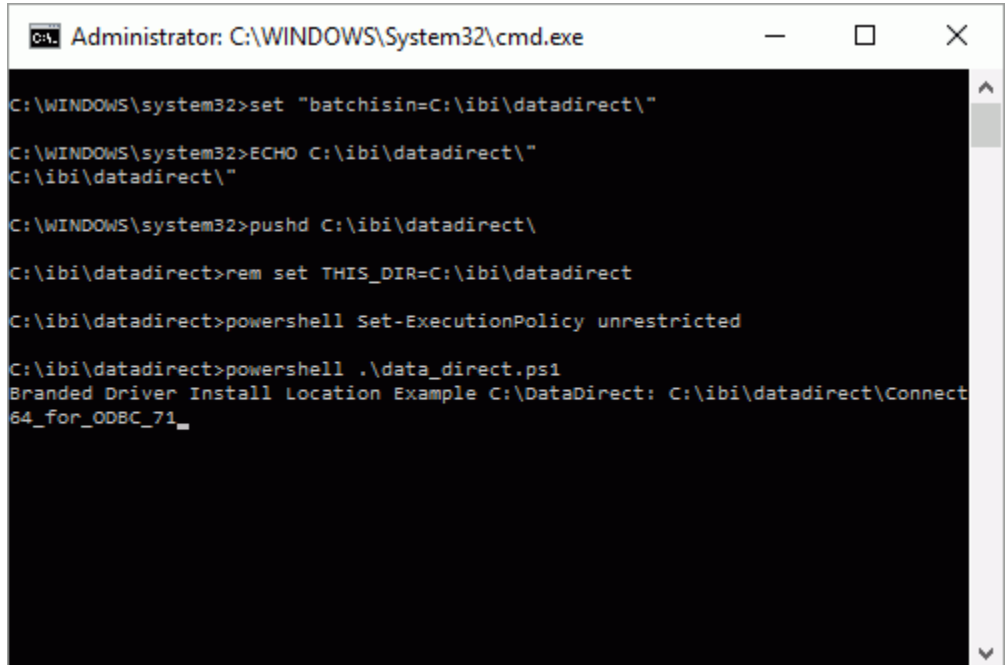
The following procedure walks you through a sample configuration for the DataDirect ODBC driver.

1. Create a directory that is accessible to the Report Server. This procedure will use the C:\ibi\datadirect directory as an example.
2. Extract all of the contents from the *Hyperstage_datadirect.zip* file into the datadirect directory.
3. Extract the *Connect_64_for_ODBC71* folder from the DATADIRECT_CONNECT64_ODBC_7.1.6_WIN_64_BRAND.zip file into the C:\ibi\datadirect directory.
4. Run the *datadirecteg.exe* file to configure the ODBC Driver for Windows.
The WinZip Self-Extractor dialog box opens.
5. Browse to the C:\ibi\datadirect folder, as shown in the following image.



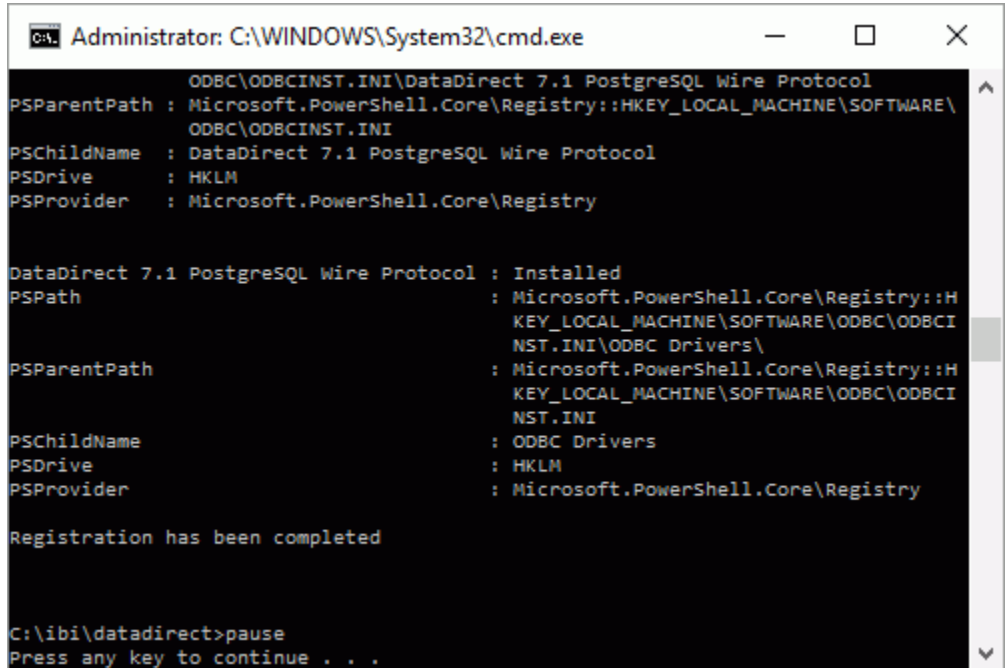
6. Click *Unzip*, and then click *OK*, to close the confirmation dialog box.
The *data_direct.ps1* and *data_direct.bat* files are created in the directory.

7. Right-click the *data_direct.bat* file and click *Run as Administrator*.
8. Type the location of the Connect64_for_ODBC_71 directory (for example, C:\ibi\datadirect\Connect64_for_ODBC_71), as shown in the following image.



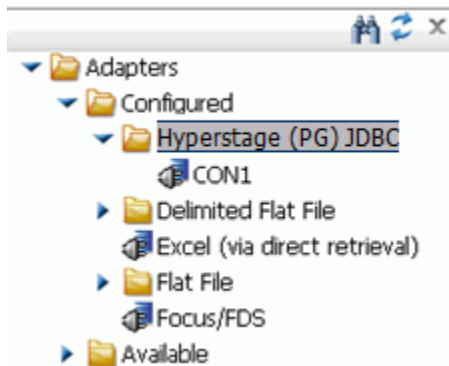
```
Administrator: C:\WINDOWS\System32\cmd.exe
C:\WINDOWS\system32>set "batchisin=C:\ibi\datadirect\"
C:\WINDOWS\system32>ECHO C:\ibi\datadirect\"
C:\ibi\datadirect\"
C:\WINDOWS\system32>pushd C:\ibi\datadirect\
C:\ibi\datadirect>rem set THIS_DIR=C:\ibi\datadirect
C:\ibi\datadirect>powershell Set-ExecutionPolicy unrestricted
C:\ibi\datadirect>powershell .\data_direct.ps1
Branded Driver Install Location Example C:\DataDirect: C:\ibi\datadirect\Connect
64_for_ODBC_71_
```

9. Press Enter to configure the Driver, as shown in the following image.



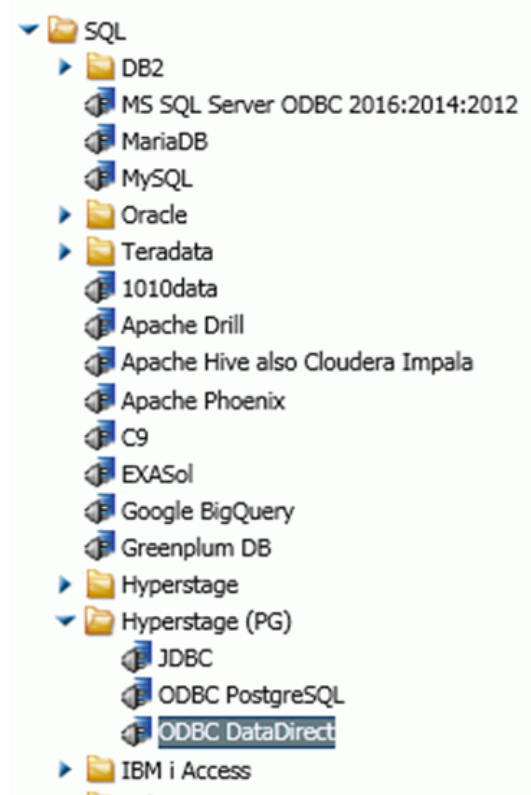
10. If configured, remove the existing Hyperstage (PG) Adapter by completing the following steps:
 - a. Launch the Reporting Server Console.
 - b. Click the *Adapters* tab.
 - c. Expand the *Configured* folder.

The existing Hyperstage (PG) Adapter is shown in the folder, as shown in the following image.



- d. Right-click the *Hyperstage (PG) JDBC* folder and click *Remove*.
11. Next, configure the Hyperstage (PG) ODBC DataDirect Adapter by completing the following steps. From the Reporting Server Console:
 - a. Click the *Adapters* tab.
 - b. Expand the *Available* folder.
 - c. Expand the *SQL* folder.
 - d. Expand the *Hyperstage (PG)* folder.

The ODBC DataDirect option is available, as shown in the following image.



Note: This option is only available if an existing Hyperstage (PG) adapter is removed from your configuration.

- e. Double-click *ODBC DataDirect* to add the adapter.

The Add Hyperstage (PG) ODBC DataDirect to Configuration dialog box opens.

- f. Provide details for the Hyperstage Server to which you are connecting that are specific to your environment. The following image shows sample parameters.

Add Hyperstage (PG) ODBC DataDirect to Configuration

Connect parameters

- Connection Name: CON01
- System: localhost Sample: localhost
- Home Directory: C:\ibi\srv82\home\hs\
- Tools Directory: C:\ibi\srv82\home\hs\bin
- Security: Explicit
- User: srvadmin
- Password: ●●●●●●●●
- Default Database: webfocus Sample: webfocus
- Additional connection string keywords (Optional): port=8424

Environment

Select profile: edasprof (type in a new one or select one from the list)

Buttons: Cancel, Configure, Test, Test DBMS Case Sensitivity

- g. Click *Configure*.

A confirmation message opens, indicating that the adapter was successfully added to the configuration.

12. Configure additional settings to edasprof. From the Reporting Server Console:

- a. Click the *Workspace* tab.
- b. Expand the *Configuration Files* folder.
- c. Double-click the *Server Profile - edasprof.prf* file, or right-click it and click *Open*.

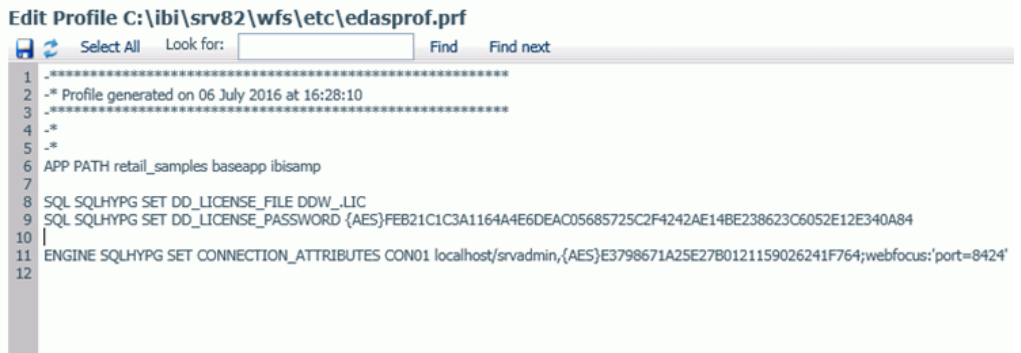
The Edit Profile window opens.

- d. Add the following text:

```
SQL SQLHYPG SET DD_LICENSE_FILE DDW_.LIC
SQL SQLHYPG SET DD_LICENSE_PASSWORD
{AES}FEB21C1C3A1164A4E6DEAC05685725C2F4242AE14BE238623C6052E12E340A84
```

Note: This text is also found in the Sample_edasprof_with_DataDirect_ODBC_Settings.txt file that is packaged in the Hyperstage_datadirect.zip folder.

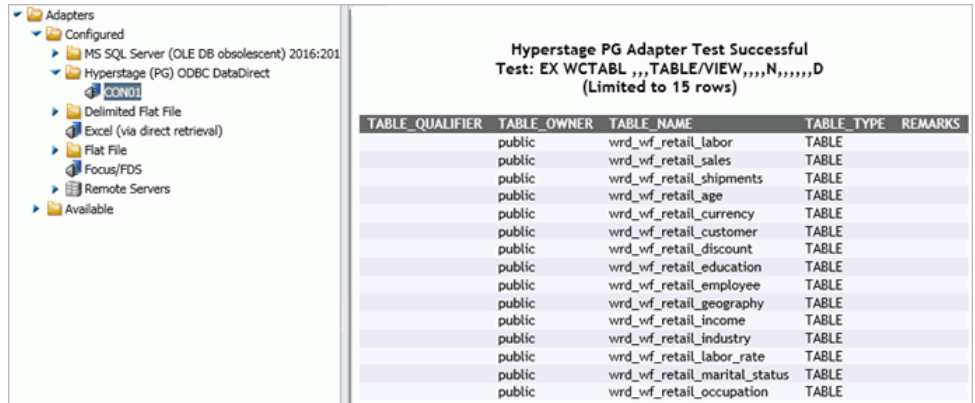
An example of the Edit Profile window with this text is shown in the following image.



13. Test the adapter. From the Reporting Server Console:

- a. Click the *Adapters* tab.
- b. Expand the *Configured* folder.
- c. Expand the *Hyperstage (PG) ODBC DataDirect* folder.
- d. Right-click *CON01* and click *Test*.

The Hyperstage PG Adapter Test Successful window opens, as shown in the following image.



The DataDirect ODBC driver is ready to be used to retrieve large volumes of data.



Feedback

Customer success is our top priority. Connect with us today!

Information Builders Technical Content Management team is comprised of many talented individuals who work together to design and deliver quality technical documentation products. Your feedback supports our ongoing efforts!

You can also preview new innovations to get an early look at new content products and services. Your participation helps us create great experiences for every customer.

To send us feedback or make a connection, contact Sarah Buccellato, Technical Editor, Technical Content Management at Sarah_Buccellato@ibi.com.

To request permission to repurpose copyrighted material, please contact Frances Gambino, Vice President, Technical Content Management at Frances_Gambino@ibi.com.

WebFOCUS



Using the DataDirect ODBC Driver for Hyperstage

DN4501680.0517